



THE CONTRACTOR SHALL NOTIFY UNDERGROUND SERVICE ALERT
AND THE CITY PUBLIC WORKS AGENCY AT LEAST 48 HOURS
(2 WORKING DAYS) PRIOR TO BEGINNING ANY EXCAVATION
IN THE VICINITY OF UNDERGROUND FACILITIES.

PLANS FOR THE CONSTRUCTION OF CITYWIDE PREVENTIVE MAINTENANCE RESURFACING

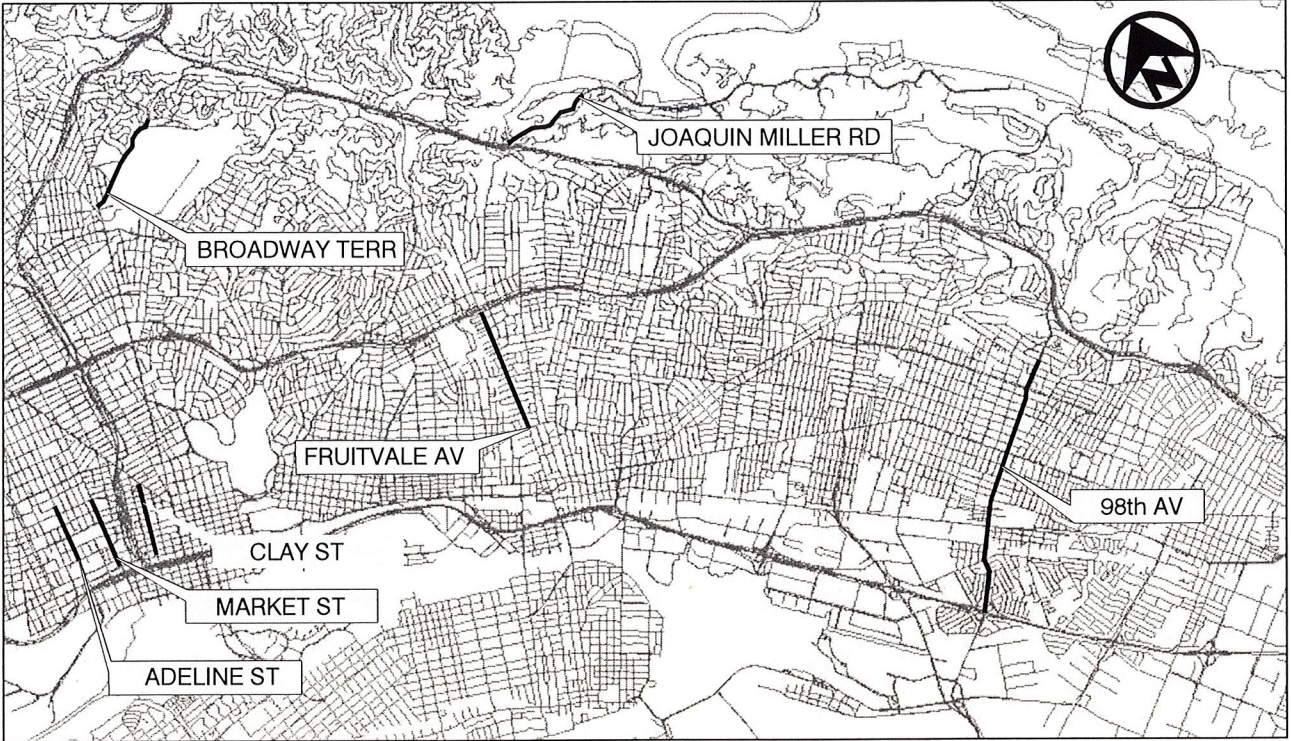
FUNDED BY:
MEASURE BB

CITY PROJECT NO. C427720

INDEX OF DRAWINGS

SHEET NAME	SHEET NUMBER	SECTION	DESCRIPTION / STREET LOCATIONS
T-01	1	TITLE SHEET	COVER SHEET, LOCATION MAP, AND INDEX SHEET
D-01	2	DETAILS	LEGENDS, ABBREVIATIONS, SYMBOLS, GENERAL NOTES, AND PROJECT NOTES
D-02	3		POLLUTION PREVENTION
D-03 - D-07	4 - 8	MISC. DETAILS	FULL - WIDTH MILLING / SW REPAIR / MODIFIED CURB & GUTTER LADDERED X-WALKS / ADV YIELD LINE / CORE DATA TABLE MODIFIED CURB RAMPS / FH MARKER LOCATIONS / PAVEMENT UNDULATION
L-01 - L-05	9 - 13	LAYOUT	98TH AVE - HIGHWAY 880 ON RAMP TO THERMAL ST
L-06 - L-07	14 - 15		BROADWAY TERRACE - BROADWAY TO HARBORD DR
L-08 - L-09	16 - 17		ADELINE ST - 10TH ST TO 19TH ST
L-10 - L-12	18 - 20		FRUITVALE AVE - FOOTHILL BLVD TO HAROLD ST
L-13 - L-14	21 - 22		MARKET ST - 7TH ST TO 18TH ST
L-15 - L-16	23 - 24		JOAQUIN MILLER RD (NB) - MONTEREY BLVD TO SANBORN DR
L-17 - L-18	25 - 26		CLAY ST - 7TH ST TO SAN PABLO AVE
L-19 - L-20	27 - 28		MARTIN LUTHER KING JR WAY - 27TH TO W MACARTHUR
L-21	29		LINWOOD AVE - E 38TH ST TO HAMPLE ST
		STRIPING PLANS	STRIPING PLANS WILL BE PROVIDED AFTER BID OPENING AND PRIOR TO NOTICE TO PROCEED

CITY OF OAKLAND
LOCATION MAP



MICHAEL NEARY, P.E.
ASSISTANT DIRECTOR, PWA
DEPARTMENT OF ENGINEERING AND CONSTRUCTION



CITY OF OAKLAND
BUREAU OF ENGINEERING AND
CONSTRUCTION
250 FRANK H. OGAWA PLAZA
SUITE 4314
OAKLAND, CA 94612
(510) 238-3437
FAX (510) 238-7227

ENGINEERING DESIGN AND
RIGHT-OF-WAY DIVISION

DIVISION MANAGER

TRANSPORTATION PLANNING &
FUNDING

DIVISION MANAGER

PROJECT DELIVERY DIVISION

DIVISION MANAGER

TRANSPORTATION SERVICES

DIVISION MANAGER

CITY ADMINISTRATOR'S OFFICE

CITY ADA COORDINATOR

PWA INFRASTRUCTURE AND OPERATIONS

ASSISTANT DIRECTOR

CIVIL DESIGN



SUPERVISING CIVIL ENGINEER

CIVIL ENGINEER

RCE NO. C65366 EXP. 09/30/17

CHECKED BY JIMMY MACH

DESIGNED BY AC

DRAWN BY AC

No.	BY	DATE	REFERENCE

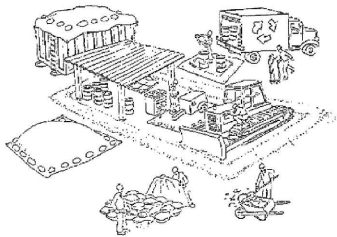
PROJECT NO.
C427720

SCALE:
NTS
DATE:
APRIL 2016

SHEET NO.
1 OF 25

C:\Users\jmach\OneDrive\Documents\Projects\003 Project\001 C427720 Citywide Preventive Maintenance Resurfacing\002 Design\Plan Sheets\T-01 Title Sheet.dwg
07-22-16
jmach

Pollution Prevention - It's Part of the Plan



Make sure your crews and subs do the job right!

Runoff from streets and other paved areas is a major source of pollution and damage to creeks and the San Francisco Bay. Construction activities can directly affect the health of creeks and the Bay unless contractors and crews plan ahead to keep dirt, debris, and other construction waste away from storm drains and local creeks. Following these guidelines and the project specifications will ensure your compliance with City of Oakland requirements.

Materials storage & spill cleanup

Non-hazardous materials management

- ✓ Sand, dirt, and similar materials must be stored at least 10 feet (3 meters) from catch basins. All construction material must be covered with a tarp and contained with a perimeter control during wet weather or when rain is forecasted or when not actively being used within 14 days.
- ✓ Use (but don't overuse) reclaimed water for dust control as needed.
- ✓ Sweep or vacuum streets and other paved areas daily. Do not wash down streets or work areas with water!
- ✓ Recycle all asphalt, concrete, and aggregate base material from demolition activities. Comply with City of Oakland requirements for recycling construction materials, wood, gyp board, pipe, etc."
- ✓ Check dumpsters regularly for leaks and to make sure they are not overfilled. Repair or replace leaking dumpsters promptly.
- ✓ Cover all dumpsters with a tarp at the end of every work day or during wet weather.

Hazardous materials management

- ✓ Label all hazardous materials and hazardous wastes (such as pesticides, paints, thinners, solvents, fuel, oil, and antifreeze) in accordance with city, county, state, and federal regulations.
- ✓ Store hazardous materials and wastes in water tight containers, store in appropriate secondary containment, and cover them at the end of every work day or during wet weather or when rain is forecasted.
- ✓ Follow manufacturer's application instructions for hazardous materials and be careful not to use more than necessary. Do not apply chemicals outdoors when rain is forecasted within 24 hours.
- ✓ Be sure to arrange for appropriate disposal of all hazardous wastes.

Spill prevention and control

- ✓ Keep a stockpile of spill cleanup materials (rags, absorbents, etc.) available at the construction site at all times.
- ✓ When spills or leaks occur, contain them immediately and be particularly careful to prevent leaks and spills from reaching the gutter, street, or storm drain. Never wash spilled material into a gutter, street, storm drain, or creek!
- ✓ Dispose of all containment and cleanup materials properly.
- ✓ Report any hazardous materials spills immediately! Dial 911 or City of Oakland Public Works Hotline at (510) 615-5566

Construction Entrances and Perimeter

- ✓ Establish and maintain effective perimeter controls and stabilize all construction entrances and exits to sufficiently control erosion and sediment discharges from site and trucking off site.
- ✓ Sweep or vacuum any street tracking immediately and secure sediment source to prevent further tracking.

Vehicle and equipment maintenance & cleaning

- ✓ Inspect vehicles and equipment for leaks frequently. Use drip pans to catch leaks until repairs are made; repair leaks promptly.
- ✓ Fuel and maintain vehicles on site only in a bermed area or over a drip pan that is big enough to prevent runoff.
- ✓ If you must clean vehicles or equipment on site, clean with water only in a bermed area that will not allow rinse water to run into gutters, streets, storm drains, or creeks.
- ✓ Do not clean vehicles or equipment on-site using soaps, solvents, degreasers, steam cleaning equipment, etc.



Earthwork & contaminated soils

- ✓ Keep excavated soil on the site where it will not collect in the street.
- ✓ Transfer to dump trucks should take place on the site, not in the street.
- ✓ Use fiber rolls, silt fences, or other control measures to minimize the flow of silt off the site.



- ✓ If you suspect contamination (from site history, discoloration, odor, texture, abandoned underground tanks or pipes, or buried debris), call the Engineer for help in determining what should be done, and manage disposal of contaminated soil according to their instructions.

- ✓ Earth moving activities are only allowed during dry weather by permit and as approved by the City of Oakland in the Field.
- ✓ Mature vegetation is the best form of erosion control. Minimize disturbance to existing vegetation whenever possible.
- ✓ If you disturb a slope during construction, prevent erosion by securing the soil with erosion control fabric, or seed with fast-growing grasses as soon as possible. Place fiber rolls down-slope until soil is secure.

Dewatering operations

- ✓ Effectively manage all run-on, all runoff within the site, and all runoff that discharges from the site. Run-on from off site shall be directed away from all disturbed areas or shall collectively be in compliance.



- ✓ Reuse water for dust control, irrigation, or another on-site purpose to the greatest extent possible.

- ✓ Be sure to notify and obtain approval from the Engineer before discharging water to a street, gutter, or storm drain. Filtration or diversion through a basin, tank, or sediment trap may be required.

- ✓ In areas of known contamination, testing is required prior to reuse or discharge of groundwater. Consult with the Engineer to determine what testing is required and how to interpret results. Contaminated groundwater must be treated or hauled off-site for proper disposal.

Saw cutting

- ✓ Always completely cover or barricade storm drain inlets when saw cutting. Use filter fabric, catch basin inlet filters, or sand/gravel bags to keep slurry out of the storm drain system.
- ✓ Shovel, absorb, or vacuum saw-cut slurry and pick up all waste as soon as you are finished in one location or at the end of each work day (whichever is sooner!).
- ✓ If saw cut slurry enters a catch basin, clean it up immediately.

Paving/asphalt work



- ✓ Always cover storm drain inlets and manholes when paving or applying seal coat, tack coat, slurry seal, or fog seal.
- ✓ Protect gutters, ditches, and drainage courses with sand/gravel bags, or earthen berms.
- ✓ Do not sweep or wash down excess sand from sand sealing into gutters, storm drains, or creeks. Collect sand and return it to the stockpile, or dispose of it as trash.
- ✓ Do not use water to wash down fresh asphalt concrete pavement.

Concrete, grout, and mortar storage & waste disposal

- ✓ Store concrete, grout, and mortar under cover, on pallets, and away from drainage areas. These materials must never reach a storm drain.
- ✓ Wash out concrete equipment/trucks off-site or into contained washout areas that will not allow discharge of wash water onto the underlying soil or onto the surrounding areas.



- ✓ Collect the wash water from washing exposed aggregate concrete and remove it for appropriate disposal off site.

Painting

- ✓ Never rinse paint brushes or materials in a gutter or street!
- ✓ Paint out excess water-based paint before rinsing brushes, rollers, or containers in a sink.
- ✓ Paint out excess oil-based paint before cleaning brushes in thinner.
- ✓ Filter paint thinners and solvents for reuse whenever possible. Dispose of oil-based paint sludge and unusable thinner as hazardous waste.



Landscape Materials

- ✓ Contain, cover, and store on pallets all stockpiled landscape materials (mulch, compost, fertilizers, etc.) during wet weather or when rain is forecasted or when not actively being used within 14 days.
- ✓ Discontinue the application of any erodible landscape material within 2 days of forecasted rain and during wet weather.

Storm drain polluters may be liable for fines of \$10,000 or more per day!

For references and more detailed information:
www.cleanwaterprogram.org
www.cabmphandbooks.com



CITYWIDE PREVENTIVE
MAINTENANCE RESURFACING



CITY OF OAKLAND

DEPARTMENT OF ENGINEERING AND CONSTRUCTION SERVICES
250 FRANK OGAWA PLAZA, SUITE 4314 * OAKLAND, CA 94612
(510) 238-3437 * FAX (510) 238-7227
PROJECT NO. C427720

CIVIL ENGINEER
JIMMY MACH
RCE NO. C65952 EXP. 06/30/16
CHECKED BY JIMMY MACH
DESIGNED BY AC
DRAWN BY AC

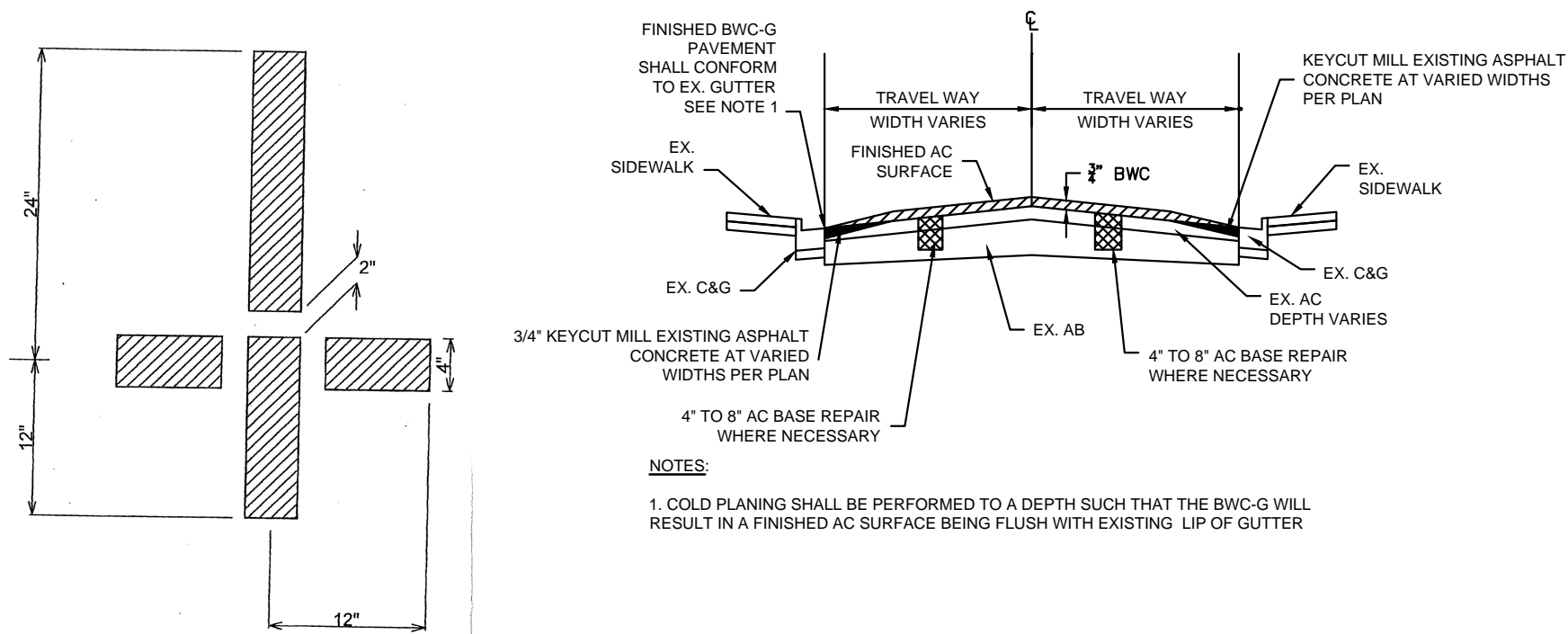
No.	DATE	BY	REFERENCE

POLLUTION PREVENTION

40 0 40 80
SCALE IN FEET

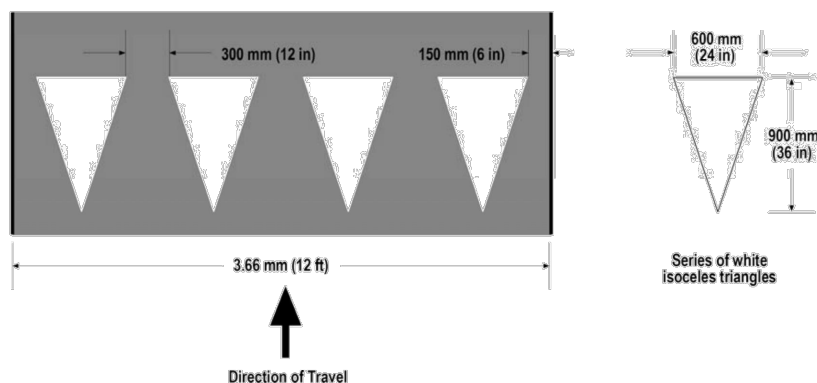
D-02

SCALE: 1"=40'
HOR.
VERT.
DATE: APRIL 2016
SHEET NO.
3 OF 29

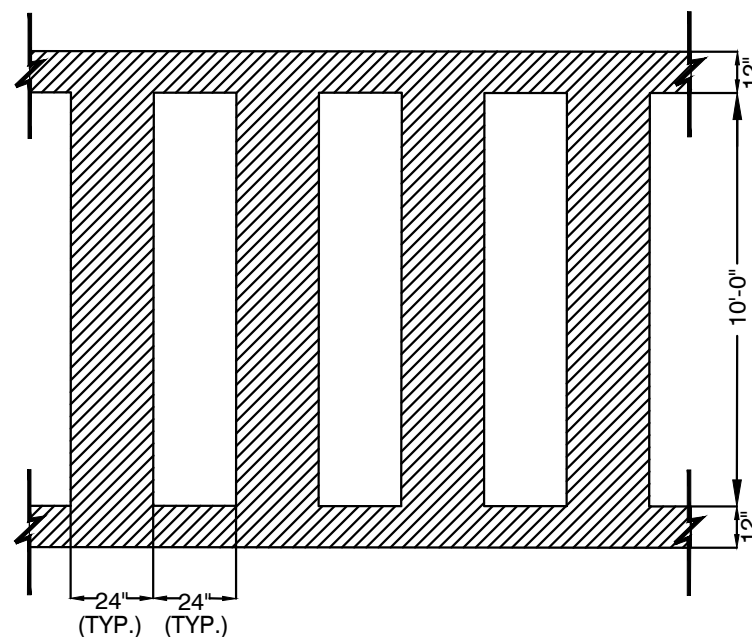


PARKING TEE DETAIL
NOT TO SCALE

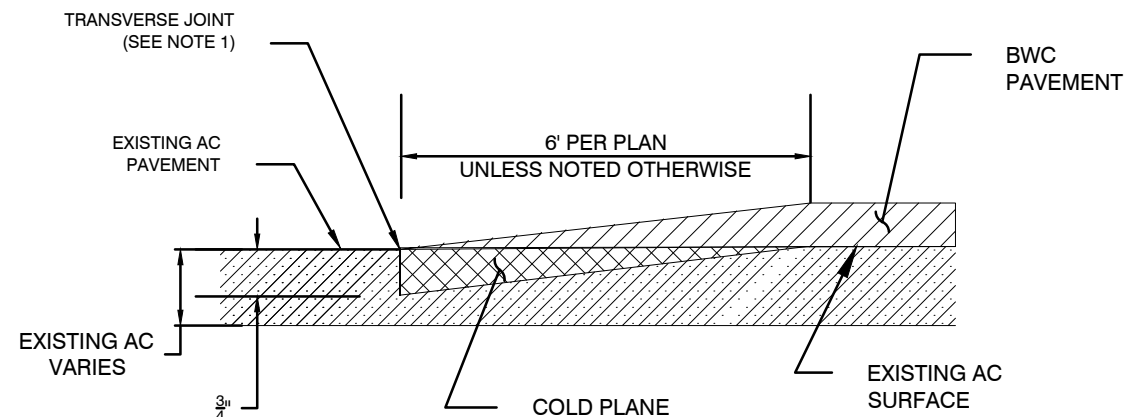
Figure 3B-14 (CA). Examples of Yield Line Layouts



ADVANCED YIELD LINE DETAIL
NOT TO SCALE

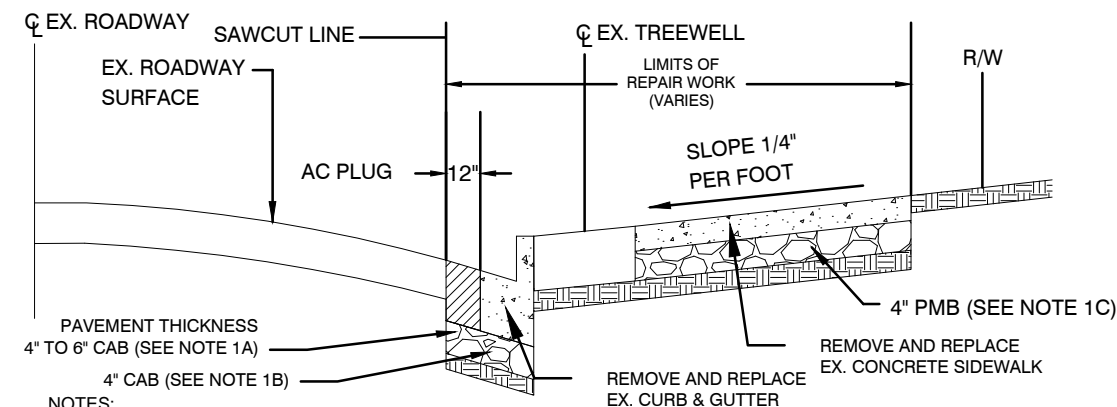


LADDERED CROSSWALK
NOT TO SCALE



NOTES:

1. EXISTING AC SHALL BE SAW CUT AT THE TRANSVERSE JOINT TO THE FULL DEPTH OF THE COLD PLANING IN A NEAT, STRAIGHT AND CLEAN VERTICAL EDGE.



NOTES:

1. REMOVE AND REPLACE EXISTING SUBGRADE MATERIAL AS DIRECTED BY THE ENGINEER.
- A: PLUG BASE REPAIR: 4"-6" CRUSHED AGGREGATE BASE (CAB)
- B: CURB AND GUTTER REPAIR: 4" CRUSHED AGGREGATE BASE (CAB)
- C: SIDEWALK BASE REPAIR: 4" PROCESSED MISCELLANEOUS BASE (PMB)
2. THE ENGINEER WILL MARK THE LIMITS OF REPAIR WORK IN THE FIELD. REPAIR WORK SHALL BE WITHIN PUBLIC RIGHT-OF-WAY OR OTHERWISE DIRECTED BY THE ENGINEER.
3. GRATES FOR TREEWELLS WILL NOT BE INSTALLED IN SIDEWALK REPAIR LOCATIONS.
4. THE AC PLUG AND CURB AND GUTTER (CAB) SHALL BE COMPACTED TO 95% RELATIVE COMPACTION. THE SIDEWALK (PMB) SHALL BE COMPACTED TO 90% RELATIVE COMPACTION.



CITYWIDE PREVENTIVE
MAINTENANCE RESURFACING



CITY OF OAKLAND
DEPARTMENT OF ENGINEERING AND CONSTRUCTION SERVICES
250 FRANK OGAWA PLAZA, SUITE 4314 * OAKLAND, CA 94612
(510) 238-3437 * FAX (510) 238-7227
PROJECT NO. C427720

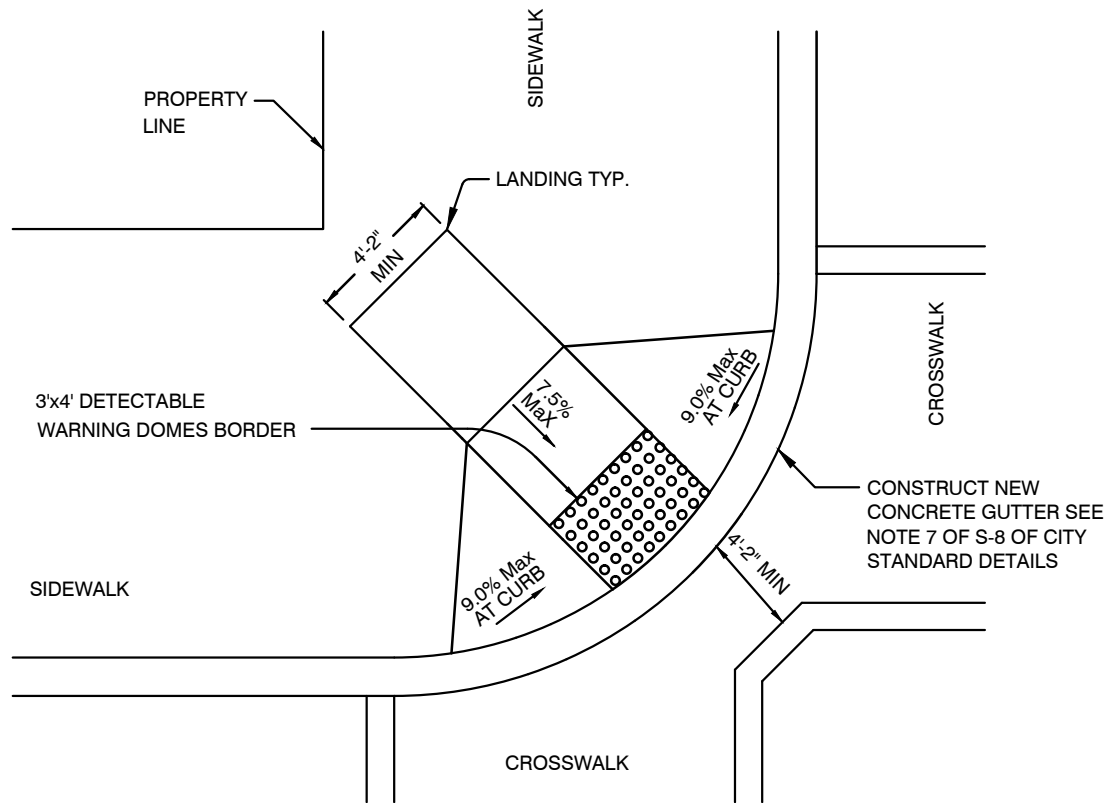
CIVIL ENGINEER
JIMMY MACH
RCE NO. C65952 EXP. 06/30/16
CHECKED BY JIMMY MACH
DESIGNED BY AC
DRAWN BY AC

No.	DATE	BY	REFERENCE

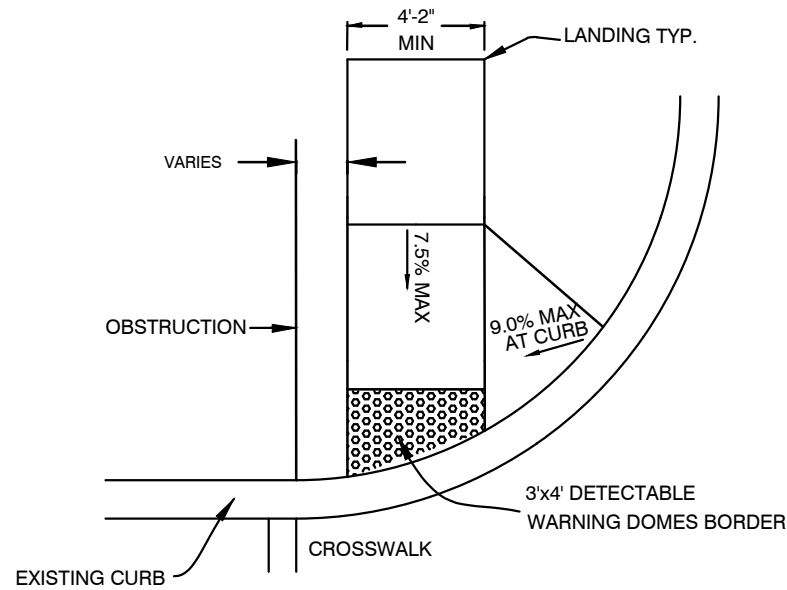
MISCELLANEOUS DETAILS

D-03

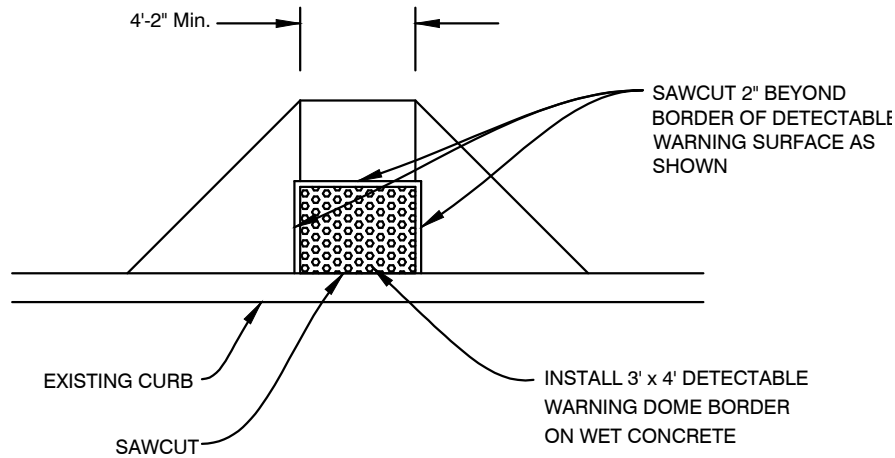
SCALE: 1"=40'
HOR.
VERT.
DATE: APRIL 2016
SHEET NO.
4 OF 29



MODIFIED CASE "E" RAMP (DIAGONAL)
(SEE THE REVISED STANDARD CALTRANS CURB RAMP DETAIL FOR MORE INFORMATION)



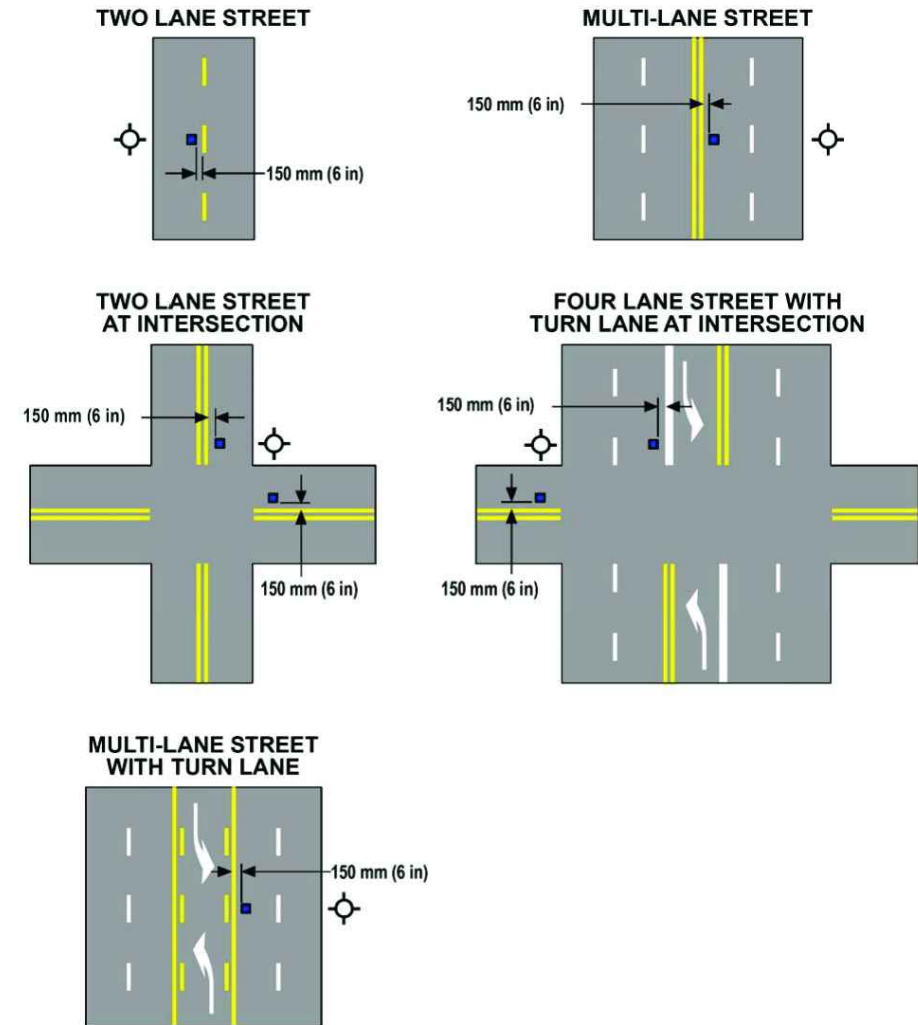
PARTIAL CASE 'E' CURB RAMP DETAIL
(USE THE REVISED STANDARD CALTRANS CURB RAMP DETAIL FOR MORE INFORMATION)



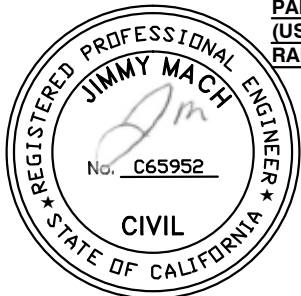
RETROFIT EXISTING DOME PAVERS DETAIL

NOTE: SEE CITY STANDARD FOR DETECTABLE WARNING DETAILS

Figure 3B-102 (CA). Examples of Fire Hydrant Location Pavement Markers



LEGEND
 Fire Hydrant
 Blue Retroreflective Raised Pavement Marker
 NOT TO SCALE



**CITYWIDE PREVENTIVE
MAINTENANCE RESURFACING**



CITY OF OAKLAND
 DEPARTMENT OF ENGINEERING AND CONSTRUCTION SERVICES
 250 FRANK OGAWA PLAZA, SUITE 4314 * OAKLAND, CA 94612
 (510) 238-3437 * FAX (510) 238-7227
 PROJECT NO. C427720

CIVIL ENGINEER
 JIMMY MACH
 RCE NO. C65952 EXP. 06/30/16
 CHECKED BY JIMMY MACH
 DESIGNED BY AC
 DRAWN BY AC

No.	DATE	BY	REFERENCE

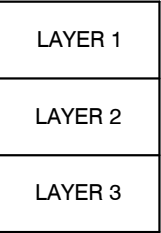
MISCELLANEOUS DETAILS

D-04

SCALE: 1"=40'
 HOR.
 VERT.
 DATE: APRIL 2016
 SHEET NO.
 5 OF 29

CORING DATA SAMPLE

Sheets	Lab_Number	Layer 1	Layer 2						Layer 3					Coring Date
		(in.)	Brick	Concrete	Dirt	Fabric (See Note 2)	Rock	MACADAM	Concrete	Dirt	Rock	MACADAM	Sand	
L-01	15-2091	16.00			X									9/1/2015
L-01	15-2092	16.00			X									10/6/2015
L-01	15-2093	15.50			X									9/2/2015
L-02	15-2094	16.00			X									10/5/2015
L-02	15-2095	16.00			X									9/10/2015
L-02	15-2096	16.00			X									10/2/2015
L-03	15-2097	16.00			X									9/16/2015
L-03	15-2098	16.50			X									10/2/2015
L-03	15-2100	16.00			X									10/1/2015
L-03	15-2099	16.00			X									9/17/2015
L-04	15-2101	16.00			X									10/1/2015
L-04	15-2102	15.50			X									9/18/2015
L-04	15-2103	16.00			X									9/29/2015
L-05	15-2104	15.00					X							9/23/2015
L-05	15-2105	12.50			X									9/28/2015
L-06	15-1540	6.00					X							6/22/2015
L-06	15-1541	6.50						X						7/6/2015
L-06	15-1542	3.50		6.5							X			6/30/2015
L-07	15-1543	3.00		6.5						X				6/30/2015
L-07	15-1544	4.00		6.5						X				7/3/2015
L-07	15-1545	8.00					X							7/6/2015
L-07	15-1751	6.00					X							7/28/2015
L-08	15-1132	9.00						X						5/11/2015
L-08	15-1073	12.00					X							5/4/2015
L-08	15-1162	6.00						X						5/14/2015
L-08	15-1075	11.00					X							5/4/2015
L-08	15-1133	5.50					X							5/11/2015
L-08	15-1074	9.00					X							5/4/2015
L-08	15-1077	12.00						X						5/6/2015
L-08	15-1076	9.00					X							5/5/2015
L-09	15-1078	2.5					X							5/5/2015
L-09	15-1163	8.0					X							5/5/2015
L-10	15-1858	4.0		5.5						X				8/18/2015
L-10	15-1953	6.5		5.5						X				8/19/2015
L-10	15-1954	4.0		6.0						X				8/25/2015
L-11	15-1956	12.5			X									8/27/2015
L-11	15-1955	5.0		6.0						X				8/28/2015
L-11	15-1957	4.5		7.0						X				8/28/2015
L-12	15-1958	13.5					X							8/26/2015
L-13	15-1193	11.0			X									5/18/2015
L-13	15-1370	9.0			X									6/15/2015
L-13	15-1194	8.0			X									5/18/2015
L-13	15-1372	9.5					X							6/12/2015
L-13	15-1371	10.0					X							6/12/2015
L-13	15-1289	10.5			X									6/2/2015
L-14	15-1373	9.0		6.0						X				6/8/2015
L-14	15-1290	9.5			X									6/3/2015
L-14	15-1291	7.5		6.0						X				6/4/2015
L-14	15-1292	10.0			X									6/4/2015
L-15	15-2077	5.0					X							9/3/2015
L-16	15-1845	4.5												8/3/2015
L-16	15-1846	5.0												8/3/2015
L-16	15-1847	4.5												8/3/2015
L-17	16-0448	5.0		6.0		1.0"					X			4/25/2016
L-17	16-0450	5.0		5.0		2.0"				X				4/25/2016
L-17	16-0451	5.0		7.0		1.5"					X			4/28/2016
L-17	16-0447	6.0		7.0		2.0"					X			5/2/2016
L-17	16-0449	3.5		12.5						X				5/2/2016
L-18	16-0445	9.0				2.0"					X			4/28/2016
L-19	16-0361	6.0		6.0		1.5"				X				4/12/2016
L-20	16-0362	6.5		8.0						X				4/11/2016
L-20	16-0363	8.5		6.0		1.5"				X				4/11/2016



CORING SAMPLE SECTION

- NOTES:
- 1

ALL DEPTH SHOWN WAS MEASURED IN INCHES FROM EXISTING FINISH GRADE DOWN.
- 2

FABRIC LAYER: DEPTH MEASURED FROM EXISTING FINISH GRADE.



CITYWIDE PREVENTIVE
MAINTENANCE RESURFACING



CITY OF OAKLAND
DEPARTMENT OF ENGINEERING AND CONSTRUCTION SERVICES
250 FRANK OGAWA PLAZA, SUITE 4314 * OAKLAND, CA 94612
(510) 238-3437 * FAX (510) 238-7227
PROJECT NO. C427720

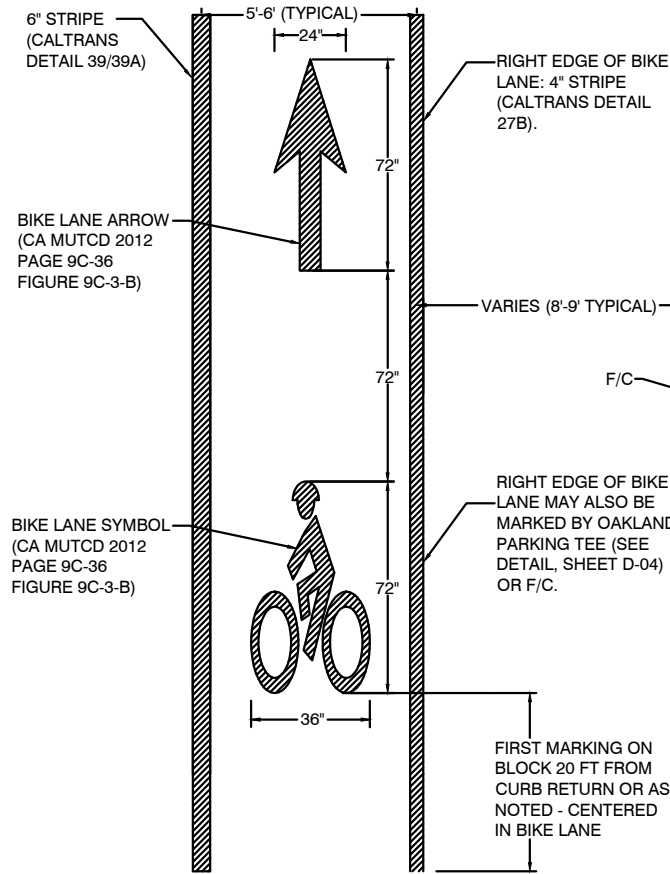
CIVIL ENGINEER	JIMMY MACH
RCE NO.	C65952
EXP.	06/30/16
CHECKED BY	JIMMY MACH
DESIGNED BY	AC
DRAWN BY	AC

No.	DATE	BY	REFERENCE

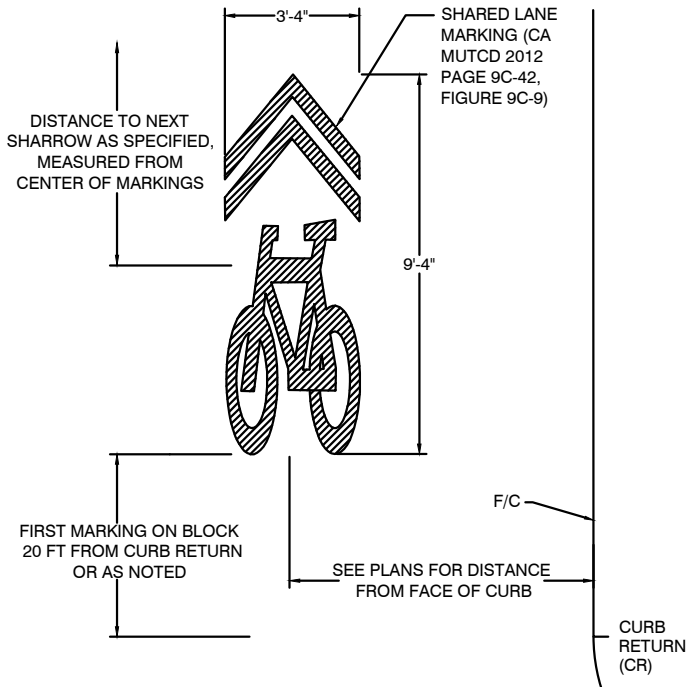
CORING DATA TABLE

D-05

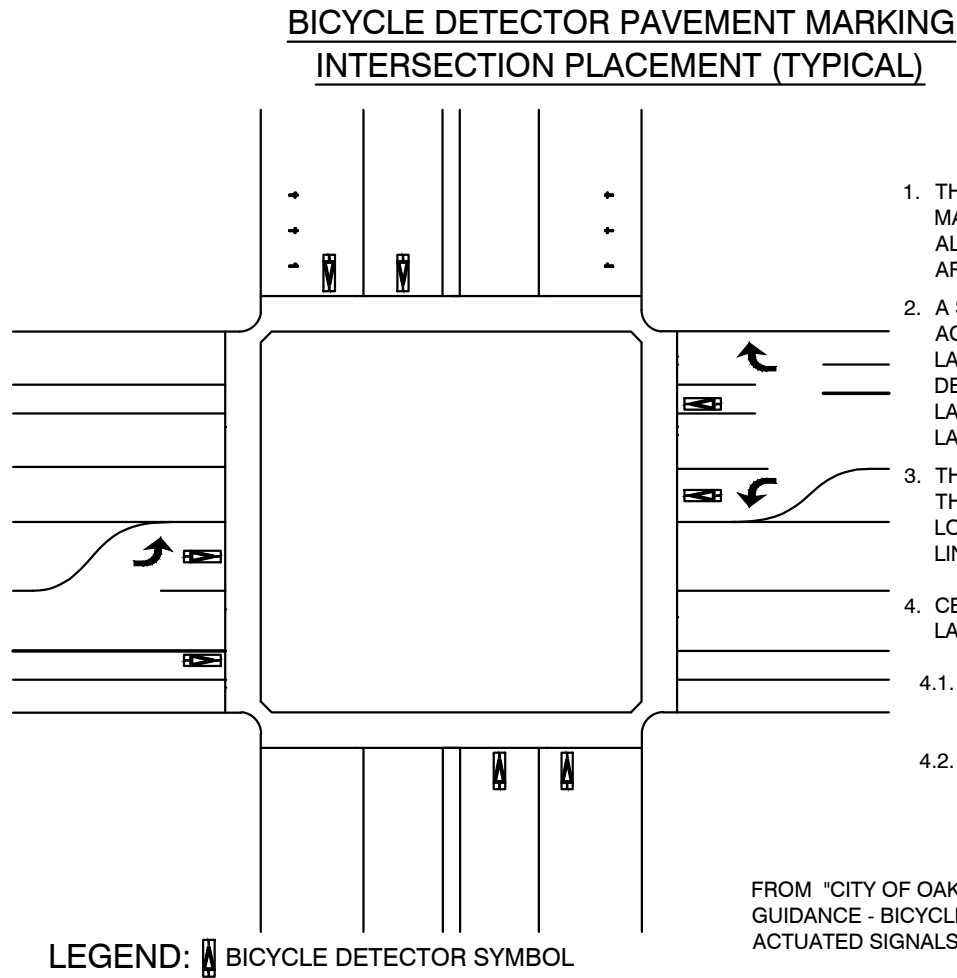
SCALE: 1"=40'
HOR.
VERT.
DATE: APRIL 2016
SHEET NO.
6 OF 29



BIKE LANE SYMBOL AND ARROW MARKINGS

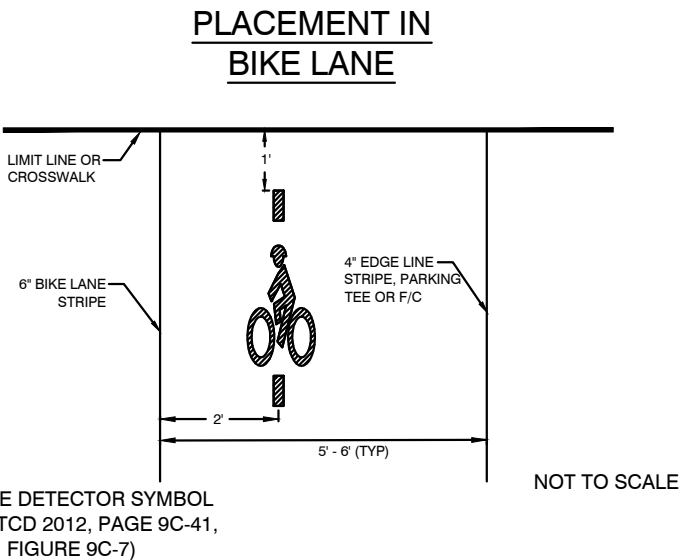
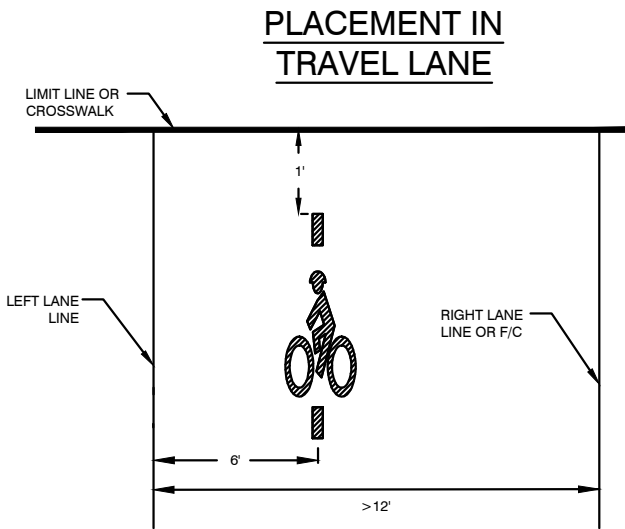


SHARED LANE MARKING (SHARROW)



GENERAL NOTES

1. THE BICYCLE DETECTOR PAVEMENT MARKING ("SYMBOL") SHALL BE USED AT ALL ACTUATED TRAFFIC SIGNALS THAT ARE CAPABLE OF DETECTING BICYCLES.
2. A SYMBOL SHALL BE INSTALLED AT EACH ACTUATED APPROACH IN THE RIGHT-MOST LANE SERVING THE BICYCLIST'S DESTINATION, INCLUDING LEFT TURN LANES AND THROUGH LANES OR BIKE LANES.
3. THE SYMBOL SHALL BE INSTALLED WITH THE LEADING EDGE OF THE MARKING LOCATED ONE FOOT BEHIND THE LIMIT LINE (OR CROSSWALK).
4. CENTER SYMBOL IN LANE (ALIGNED W/ LANE ASSIGNMENT ARROW) EXCEPT:
 - 4.1. IN LANES WIDER THAN 12', CENTER SYMBOL 6' FROM THE LEFT LANE LINE (SEE BELOW).
 - 4.2. IN BIKE LANES, CENTER SYMBOL 2 FT FROM THE LEFT BIKE LANE LINE (DETAIL 39/39A, SEE BELOW).



CITYWIDE PREVENTIVE
MAINTENANCE RESURFACING



CITY OF OAKLAND
DEPARTMENT OF ENGINEERING AND CONSTRUCTION SERVICES
250 FRANK OGAWA PLAZA, SUITE 4314 * OAKLAND, CA 94612
(510) 238-3437 * FAX (510) 238-7227
PROJECT NO. C427720

CIVIL ENGINEER
JIMMY MACH
RCE NO. C65952 EXP. 06/30/16
CHECKED BY JIMMY MACH
DESIGNED BY AC
DRAWN BY AC

No.	DATE	BY	REFERENCE

MISCELLANEOUS DETAILS

D-06

SCALE: 1"=40'
HOR.
VERT.
DATE: APRIL 2016
SHEET NO.
7 OF 29



CITYWIDE PREVENTIVE
MAINTENANCE RESURFACING



CITY OF OAKLAND
DEPARTMENT OF ENGINEERING AND CONSTRUCTION SERVICES
250 FRANK OGAWA PLAZA, SUITE 4314 * OAKLAND, CA 94612
(510) 238-3437 * FAX (510) 238-7227
PROJECT NO. C427720

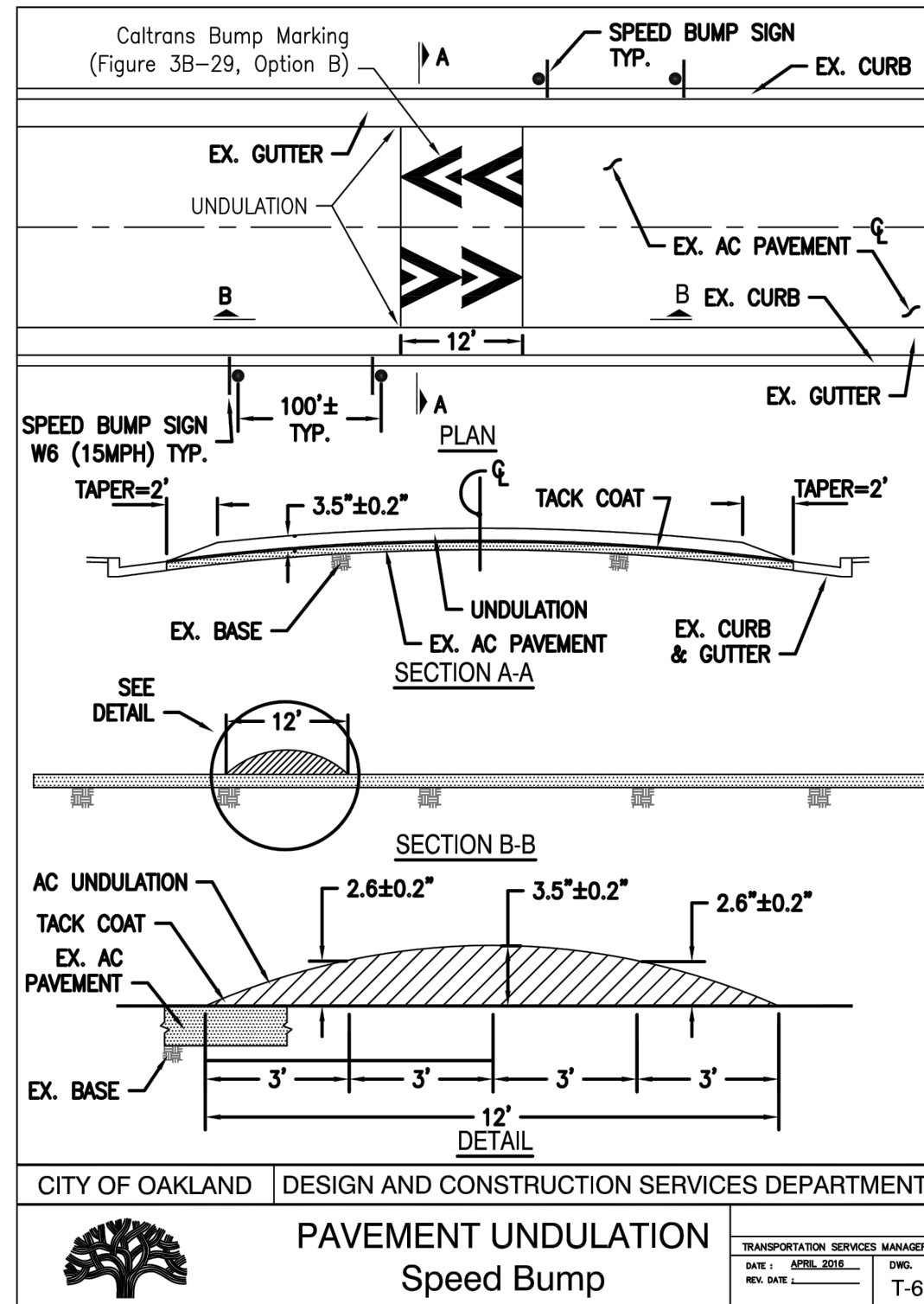
CIVIL ENGINEER	JIMMY MACH
RCE NO.	C65952 EXP. 06/30/16
CHECKED BY	JIMMY MACH
DESIGNED BY	AC
DRAWN BY	AC

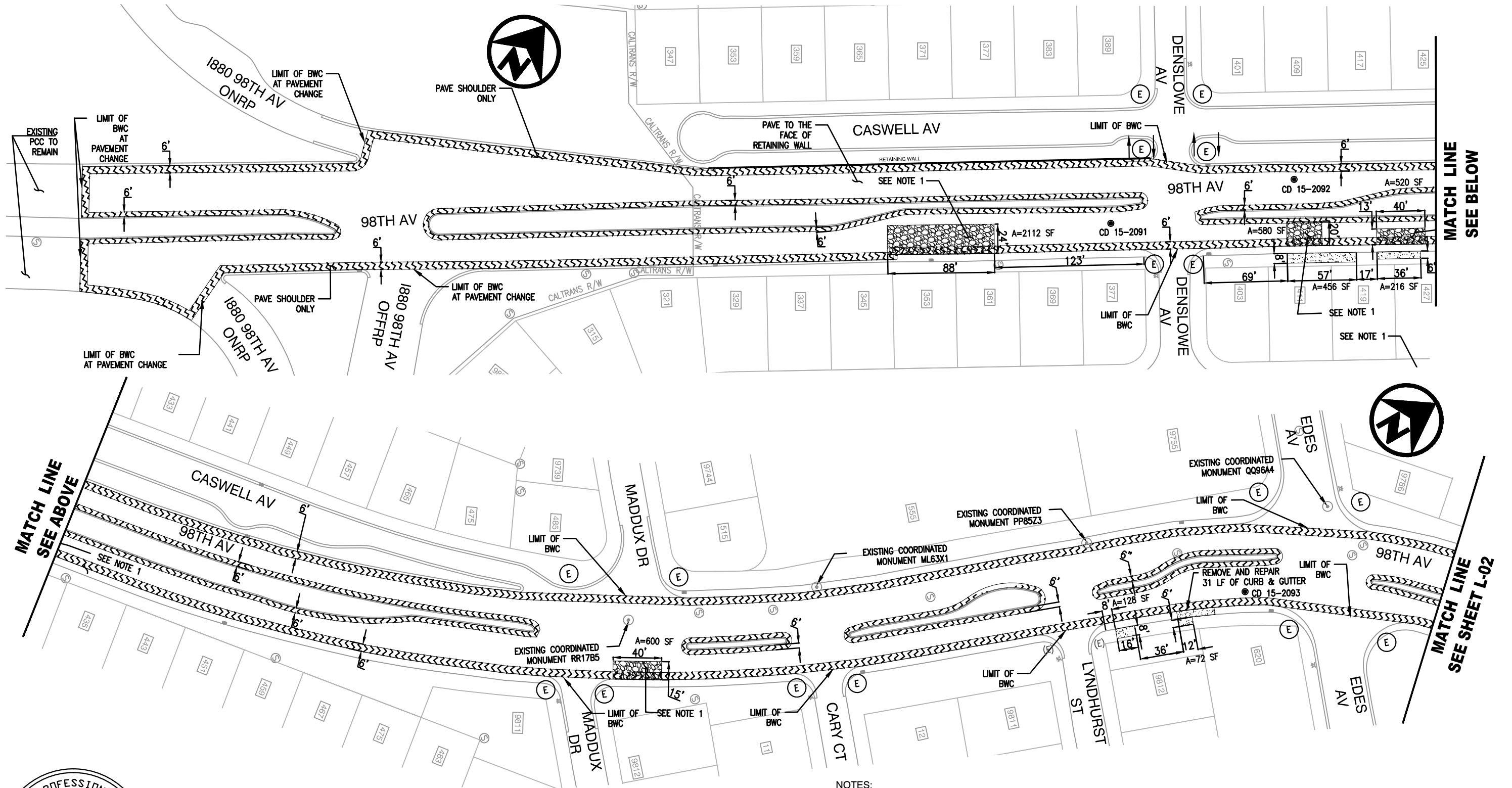
No.	DATE	BY	REFERENCE

MISCELLANEOUS DETAILS

D-07

SCALE: 1"=40'
HOR.
VERT.
DATE: APRIL 2016
SHEET NO.
8 OF 29





- NOTES:
1. BASE REPAIR FINISH SHALL MATCH EXISTING PAVEMENT GRADE PRIOR TO APPLYING KEYCUT AND BONDED WEARING COURSE, BWC
 2. FOR ALL GENERAL NOTES, LEGENDS, ABBREVIATIONS, AND SYMBOLS, SEE SHEET D-01
 3. FOR CORE SAMPLE DATA, SEE SHEET D-05



CITYWIDE PREVENTIVE
MAINTENANCE RESURFACING



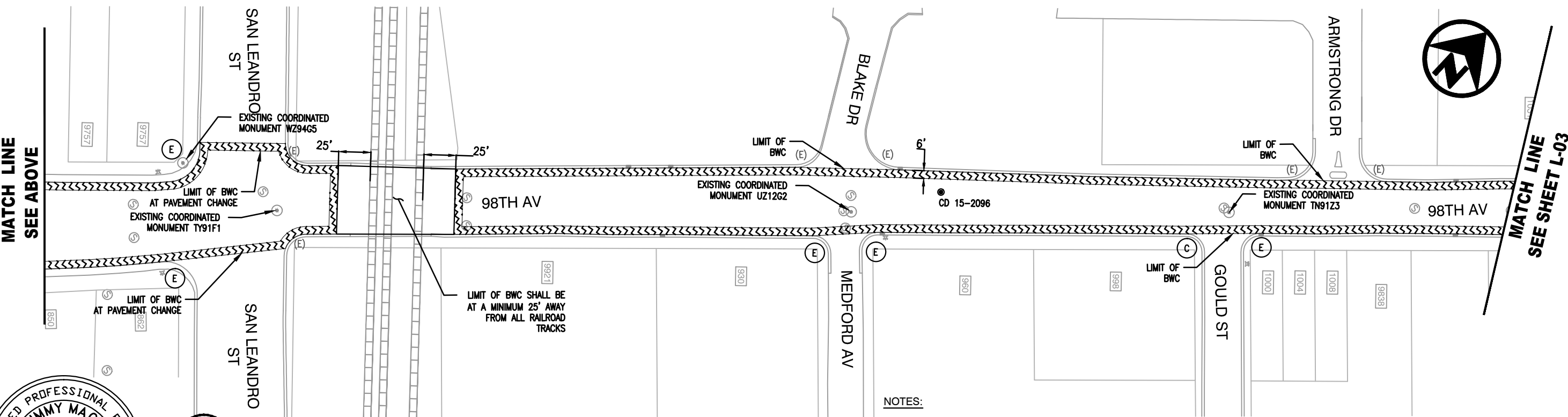
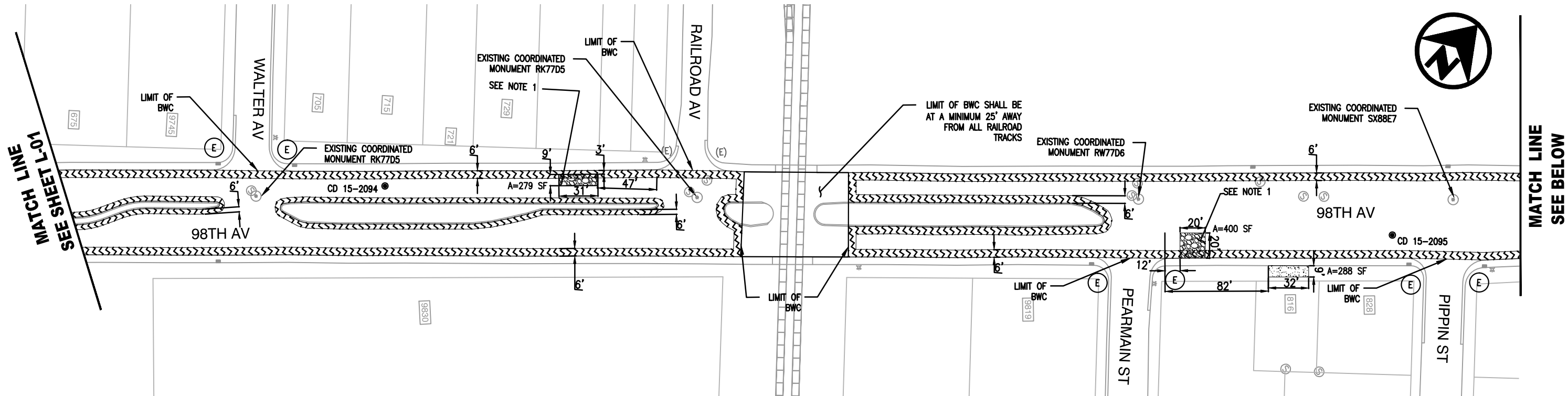
CITY OF OAKLAND
DEPARTMENT OF ENGINEERING AND CONSTRUCTION SERVICES
250 FRANK OGAWA PLAZA, SUITE 4314 • OAKLAND, CA 94612
(510) 238-3437 • FAX (510) 238-7227
PROJECT NO. C427720

CIVIL ENGINEER	JIMMY MACH	No.	DATE	BY	REFERENCE
RCE NO.	C65952	EXP.	06/30/16		
CHECKED BY	JIMMY MACH				
DESIGNED BY	AC				
DRAWN BY	AC				

LAYOUT PLAN
98TH AVE FROM
THERMAL ST TO NB 1880 ONRAMP

L-01

SCALE: 1"=40'
HOR.
VERT.
DATE: APRIL 2016
SHEET NO.
9 OF 29



NOTES:

1. BASE REPAIR FINISH SHALL MATCH EXISTING PAVEMENT GRADE PRIOR TO APPLYING KEYCUT AND BONDED WEARING COURSE, BWC
2. FOR ALL GENERAL NOTES, LEGENDS, ABBREVIATIONS, AND SYMBOLS, SEE SHEET D-01
3. FOR CORE SAMPLE DATA, SEE SHEET D-05



CITYWIDE PREVENTIVE
MAINTENANCE RESURFACING



CITY OF OAKLAND
DEPARTMENT OF ENGINEERING AND CONSTRUCTION SERVICES
250 FRANK OGAWA PLAZA, SUITE 4314 • OAKLAND, CA 94612
(510) 238-3437 • FAX (510) 238-7227
PROJECT NO. C427720

CIVIL ENGINEER	JIMMY MACH	No.	DATE	BY	REFERENCE
RCE NO.	C65952	EXP.	06/30/16		
CHECKED BY	JIMMY MACH				
DESIGNED BY	AC				
DRAWN BY	AC				

LAYOUT PLAN
98TH AVE FROM
THERMAL ST TO NB I880 ONRAMP

L-02

SCALE: 1"=40'
HOR.
VERT.
DATE: APRIL 2016
SHEET NO.
10 OF 29

MATCH LINE
SEE SHEET L-02

MATCH LINE
SEE BELOW

MATCH LINE
SEE ABOVE

MATCH LINE
SEE SHEET L-04



CITYWIDE PREVENTIVE
MAINTENANCE RESURFACING



CITY OF OAKLAND
DEPARTMENT OF ENGINEERING AND CONSTRUCTION SERVICES
250 FRANK OGAWA PLAZA, SUITE 4314 • OAKLAND, CA 94612
(510) 238-3437 • FAX (510) 238-7227
PROJECT NO. C427720

CIVIL ENGINEER
JIMMY MACH
RCE NO. C65952 EXP. 06/30/16
CHECKED BY JIMMY MACH
DESIGNED BY AC
DRAWN BY AC

No.	DATE	BY	REFERENCE

LAYOUT PLAN
98TH AVE FROM
THERMAL ST TO NB I880 ONRAMP



L-03

SCALE: 1"=40'
HOR.
VERT.
DATE: APRIL 2016
SHEET NO.
11 OF 29

NOTES:

- BASE REPAIR FINISH SHALL MATCH EXISTING PAVEMENT GRADE PRIOR TO APPLYING KEYCUT AND BONDED WEARING COURSE, BWC
- FOR ALL GENERAL NOTES, LEGENDS, ABBREVIATIONS, AND SYMBOLS, SEE SHEET D-01
- FOR CORE SAMPLE DATA, SEE SHEET D-05



CITYWIDE PREVENTIVE
MAINTENANCE RESURFACING



CITY OF OAKLAND
DEPARTMENT OF ENGINEERING AND CONSTRUCTION SERVICES
250 FRANK OGAWA PLAZA, SUITE 4314 • OAKLAND, CA 94612
(510) 238-3437 • FAX (510) 238-7227
PROJECT NO. C427720

CIVIL ENGINEER
JIMMY MACH
RCE NO. C65952 EXP. 06/30/16
CHECKED BY JIMMY MACH
DESIGNED BY AC
DRAWN BY AC

No.	DATE	BY	REFERENCE

LAYOUT PLAN
98TH AVE FROM
THERMAL ST TO NB I880 ONRAMP

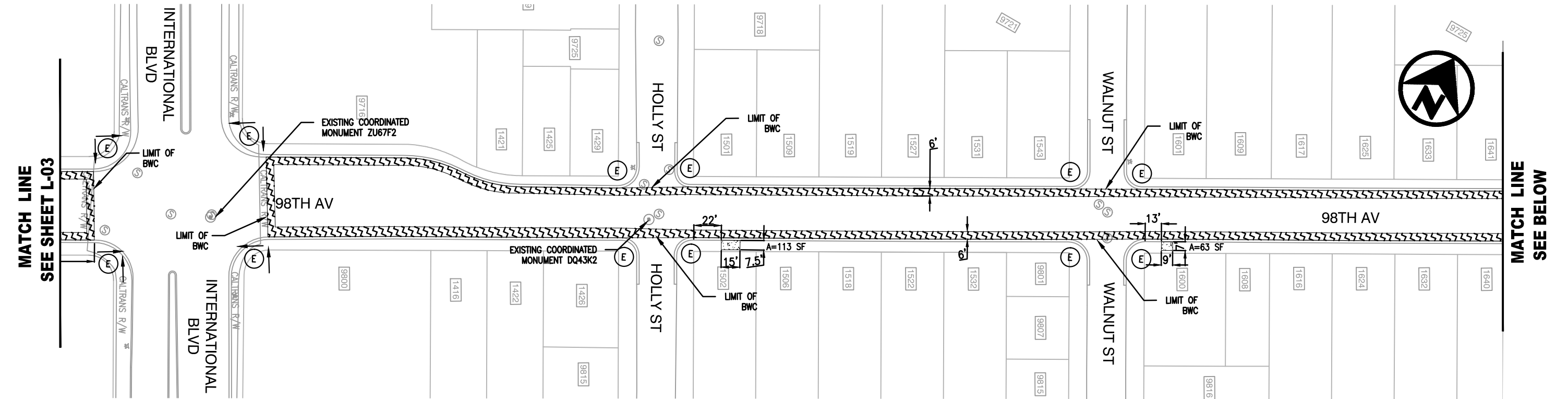
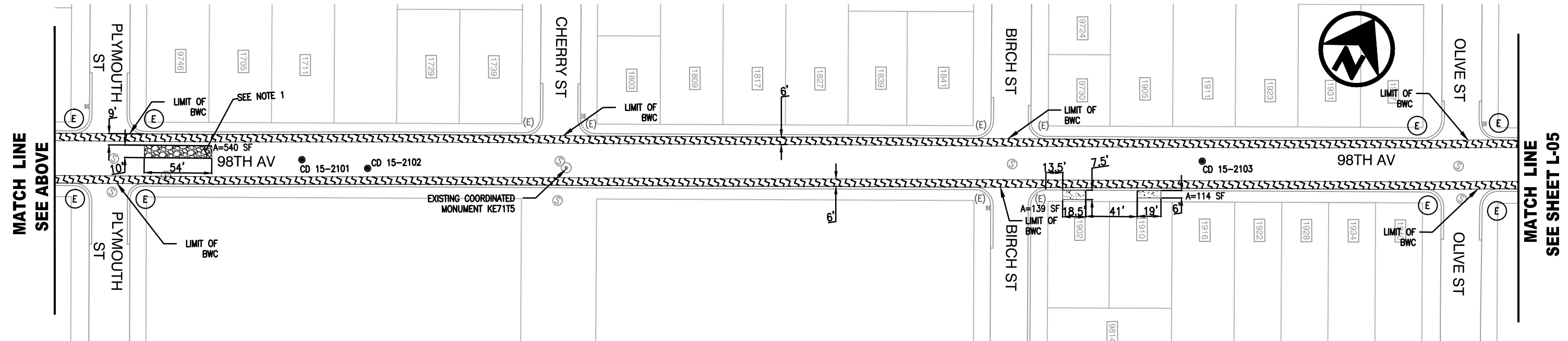


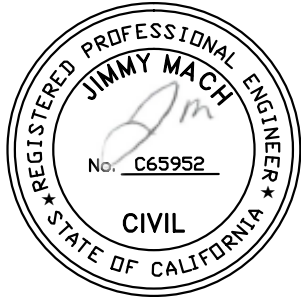
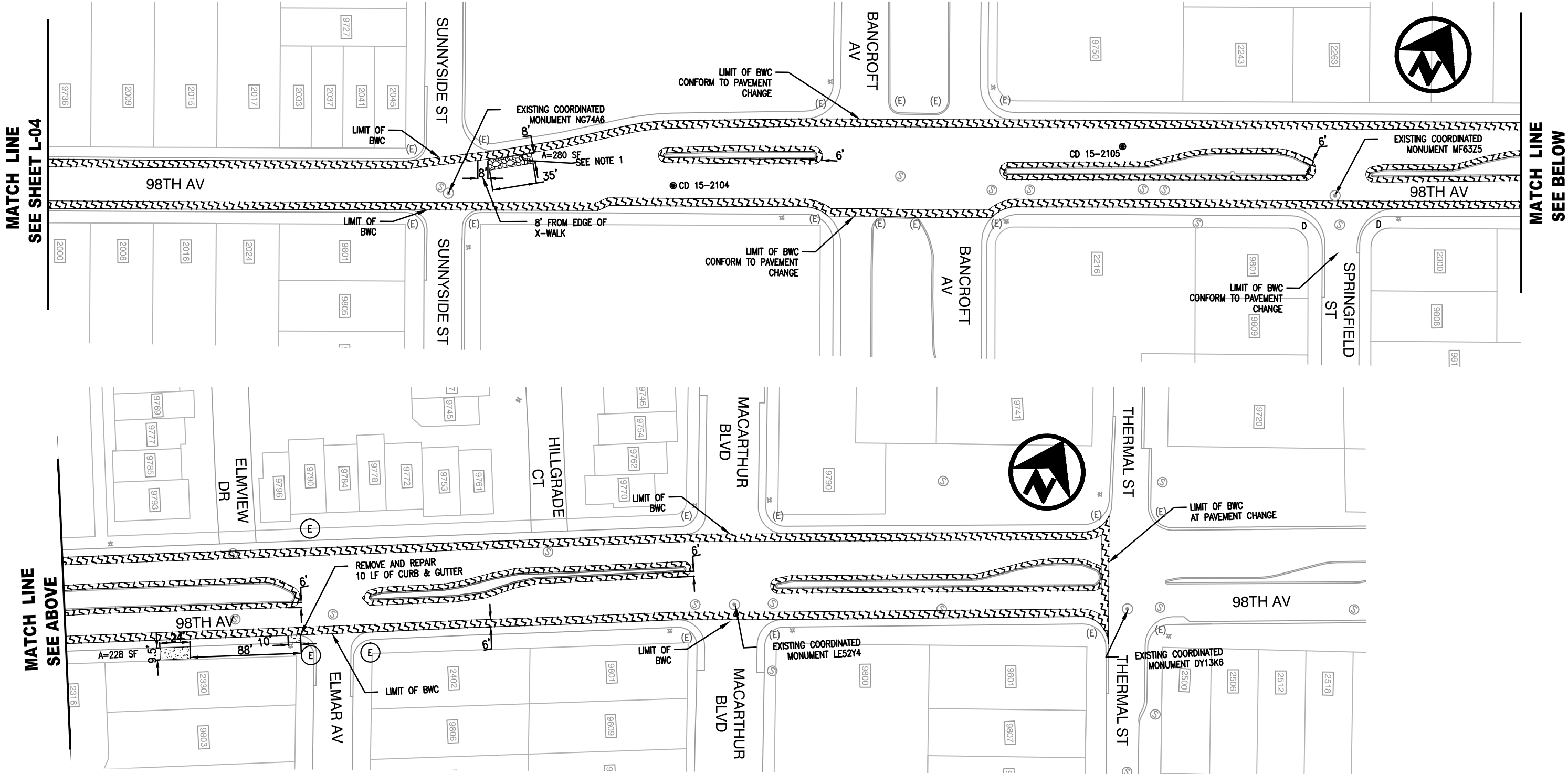
L-04

SCALE: 1"=40'
HOR.
VERT.
DATE: APRIL 2016
SHEET NO.
12 OF 29

NOTES:

1. BASE REPAIR FINISH SHALL MATCH EXISTING PAVEMENT GRADE PRIOR TO APPLYING KEYCUT AND BONDED WEARING COURSE, BWC
2. FOR ALL GENERAL NOTES, LEGENDS, ABBREVIATIONS, AND SYMBOLS, SEE SHEET D-01
3. FOR CORE SAMPLE DATA, SEE SHEET D-05





CITYWIDE PREVENTIVE
MAINTENANCE RESURFACING



CITY OF OAKLAND
DEPARTMENT OF ENGINEERING AND CONSTRUCTION SERVICES
250 FRANK OGAWA PLAZA, SUITE 4314 • OAKLAND, CA 94612
(510) 238-3437 • FAX (510) 238-7227
PROJECT NO. C427720

CIVIL ENGINEER JIMMY MACH RCE NO. C65952 EXP. 06/30/16	No.	DATE	BY	REFERENCE
CHECKED BY JIMMY MACH				
DESIGNED BY AC				
DRAWN BY AC				

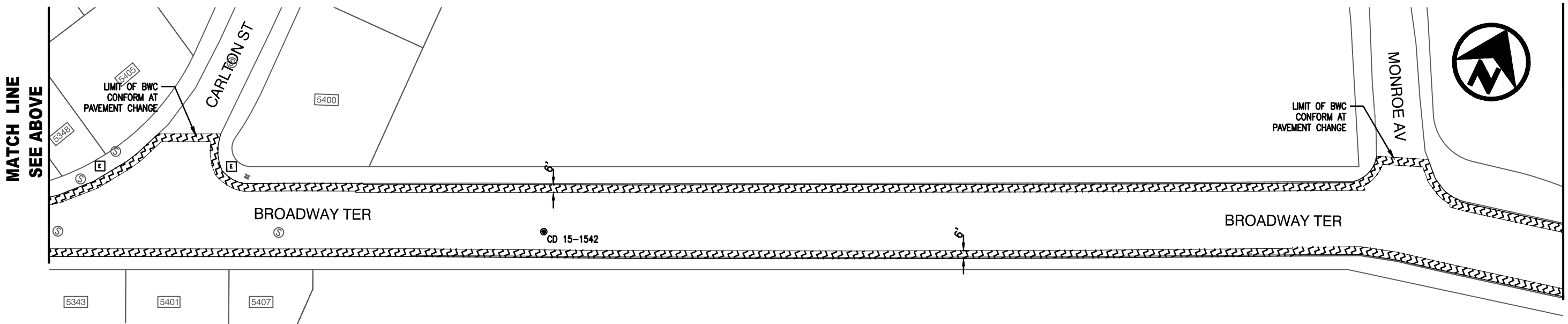
LAYOUT PLAN
98TH AVE FROM
THERMAL ST TO NB I880 ONRAMP



L-05

SCALE: 1"=40'
HOR.
VERT.
DATE: APRIL 2016
SHEET NO.
13 OF 29

- NOTES:
- BASE REPAIR FINISH SHALL MATCH EXISTING PAVEMENT GRADE PRIOR TO APPLYING KEYCUT AND BONDED WEARING COURSE, BWC
 - FOR ALL GENERAL NOTES, LEGENDS, ABBREVIATIONS, AND SYMBOLS, SEE SHEET D-01
 - FOR CORE SAMPLE DATA, SEE SHEET D-05



CITYWIDE PREVENTIVE
MAINTENANCE RESURFACING



CITY OF OAKLAND
DEPARTMENT OF ENGINEERING AND CONSTRUCTION SERVICES
250 FRANK OGAWA PLAZA, SUITE 4314 * OAKLAND, CA 94612
(510) 238-3437 * FAX (510) 238-7227
PROJECT NO. C427720

NOTES:

1. BASE REPAIR FINISH SHALL MATCH EXISTING PAVEMENT GRADE PRIOR TO APPLYING KEYCUT AND BONDED WEARING COURSE, BWC
2. FOR ALL GENERAL NOTES, LEGENDS, ABBREVIATIONS, AND SYMBOLS, SEE SHEET D-01
3. FOR CORE SAMPLE DATA, SEE SHEET D-05

CIVIL ENGINEER	No.	DATE	BY	REFERENCE
JIMMY MACH				
RCE NO. C65952 EXP. 06/30/16				
CHECKED BY JIMMY MACH				
DESIGNED BY AC				
DRAWN BY AC				

LAYOUT PLAN
BROADWAY TERRACE
FROM BROADWAY TO HARBORD DR

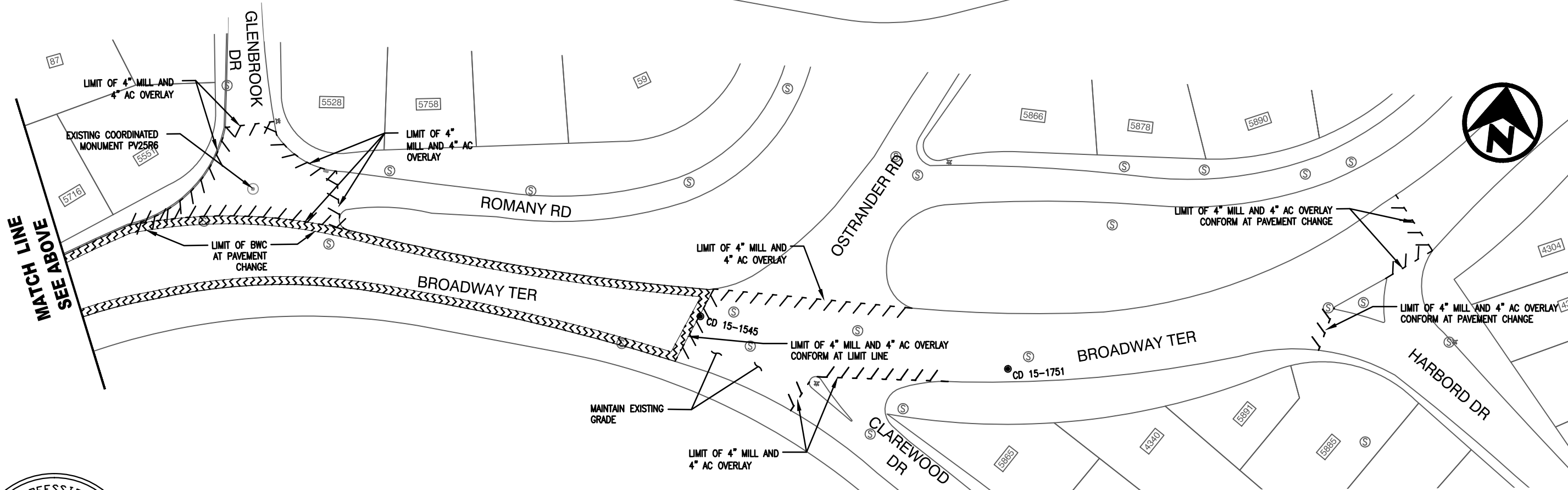


L-06

SCALE: 1"=40'
HOR.
VERT.
DATE: APRIL 2016
SHEET NO.
14 OF 29

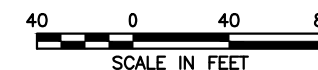
MATCH LINE
SEE SHEET L-06

MATCH LINE
SEE BELOW



NOTES:

1. FOR ALL GENERAL NOTES, LEGENDS, ABBREVIATIONS, AND SYMBOLS, SEE SHEET D-01
2. FOR CORE SAMPLE DATA, SEE SHEET D-05



CITYWIDE PREVENTIVE
MAINTENANCE RESURFACING



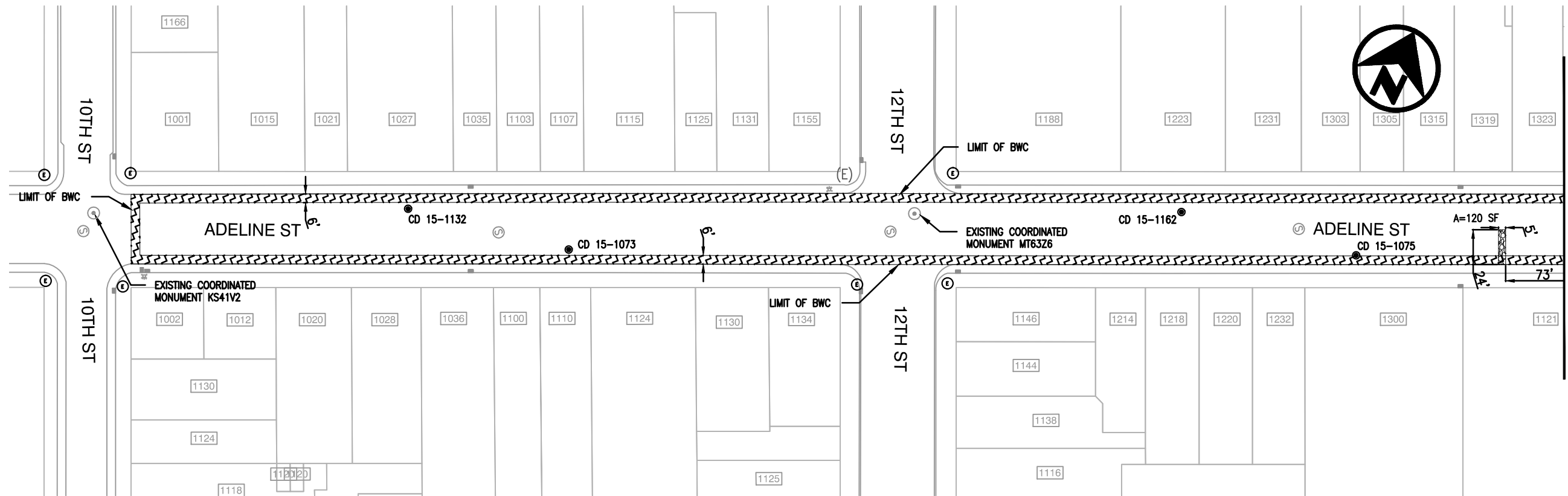
CITY OF OAKLAND
DEPARTMENT OF ENGINEERING AND CONSTRUCTION SERVICES
250 FRANK OGAWA PLAZA, SUITE 4314 • OAKLAND, CA 94612
(510) 238-3437 • FAX (510) 238-7227
PROJECT NO. C427720

CIVIL ENGINEER JIMMY MACH RCE NO. C65952 EXP. 06/30/16	No.	DATE	BY	REFERENCE
CHECKED BY JIMMY MACH				
DESIGNED BY AC				
DRAWN BY AC				

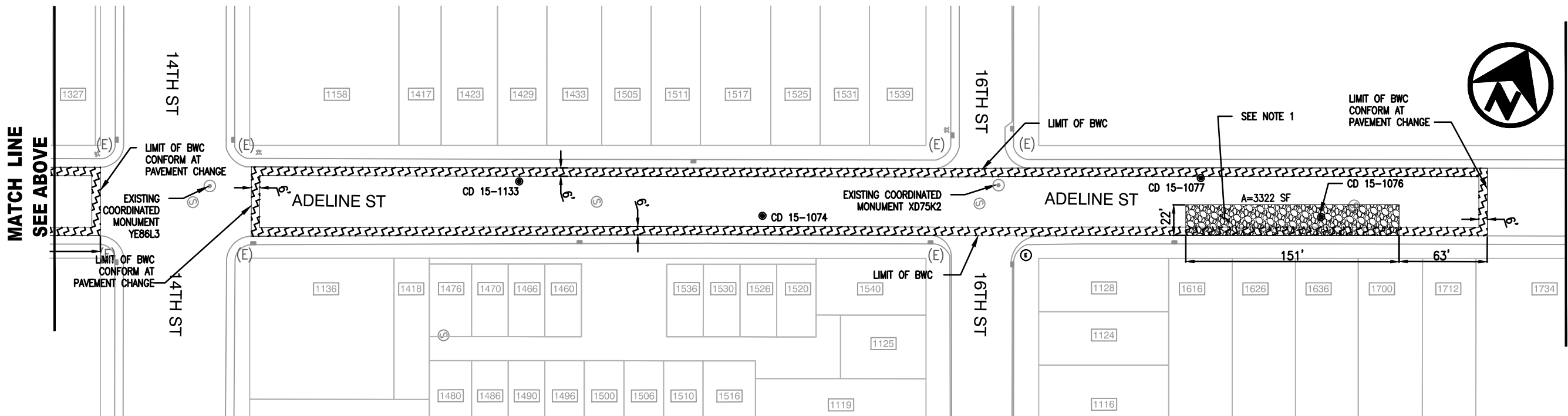
LAYOUT PLAN
BROADWAY TERRACE
FROM BROADWAY TO HARBORD DR

L-07

SCALE: 1"=40'
HOR.
VERT.
DATE: APRIL 2016
SHEET NO.
15 OF 29



MATCH LINE
SEE BELOW



MATCH LINE
SEE SHEET L-09

NOTES:

1. BASE REPAIR FINISH SHALL MATCH EXISTING PAVEMENT GRADE PRIOR TO APPLYING KEYCUT AND BONDED WEARING COURSE, BWC
2. FOR ALL GENERAL NOTES, LEGENDS, ABBREVIATIONS, AND SYMBOLS, SEE SHEET D-01
3. FOR CORE SAMPLE DATA, SEE SHEET D-05



CITYWIDE PREVENTIVE
MAINTENANCE RESURFACING



CITY OF OAKLAND
DEPARTMENT OF ENGINEERING AND CONSTRUCTION SERVICES
250 FRANK OGAWA PLAZA, SUITE 4314 * OAKLAND, CA 94612
(510) 238-3437 * FAX (510) 238-7227
PROJECT NO. C427720

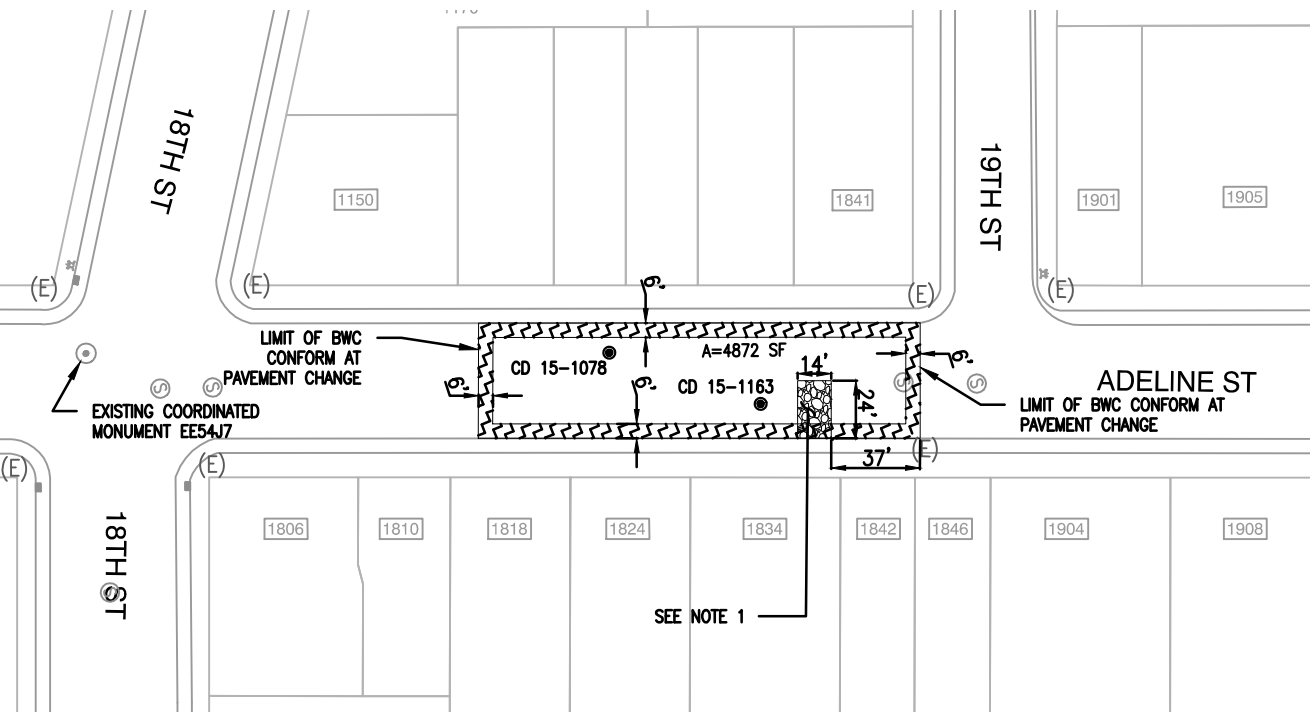
CIVIL ENGINEER	JIMMY MACH	No.	DATE	BY	REFERENCE
RCE NO.	C65952	EXP.	06/30/16		
CHECKED BY	JIMMY MACH				
DESIGNED BY	AC				
DRAWN BY	AC				

LAYOUT PLAN
ADELINE STREET
FROM 10 ST TO 19 ST

L-08

SCALE: 1"=40'
HOR.
VERT.
DATE: APRIL 2016
SHEET NO.
16 OF 29

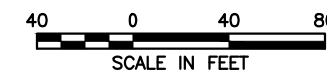
MATCH LINE
SEE SHEET L-08



SEE NOTE 1

NOTES:

1. BASE REPAIR FINISH SHALL MATCH EXISTING PAVEMENT GRADE PRIOR TO APPLYING KEYCUT AND BONDED WEARING COURSE, BWC
2. FOR ALL GENERAL NOTES, LEGENDS, ABBREVIATIONS, AND SYMBOLS, SEE SHEET D-01
3. FOR CORE SAMPLE DATA, SEE SHEET D-05



CITYWIDE PREVENTIVE
MAINTENANCE RESURFACING



CITY OF OAKLAND
DEPARTMENT OF ENGINEERING AND CONSTRUCTION SERVICES
250 FRANK OGAWA PLAZA, SUITE 4314 * OAKLAND, CA 94612
(510) 238-3437 * FAX (510) 238-7227
PROJECT NO. C427720

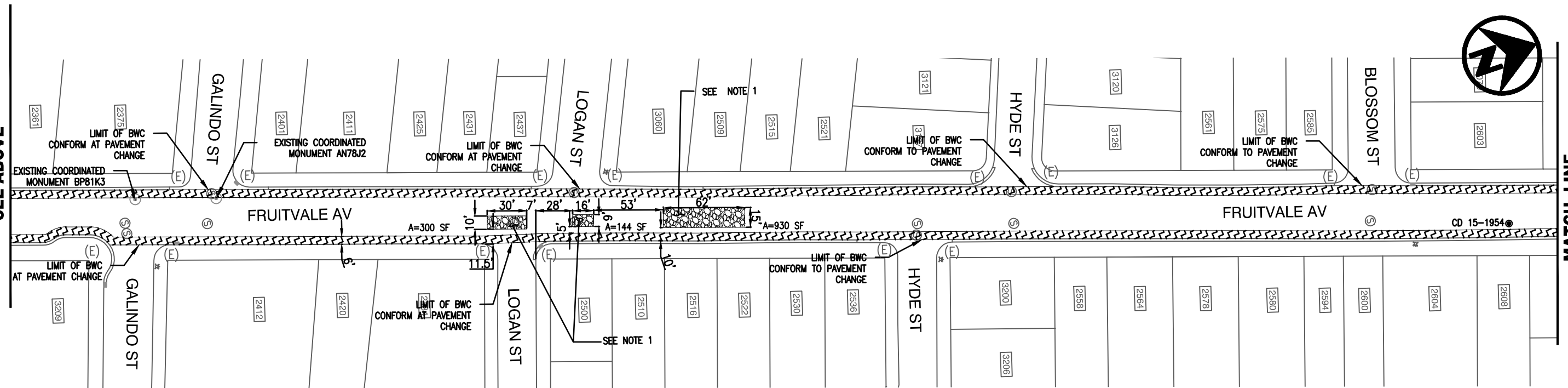
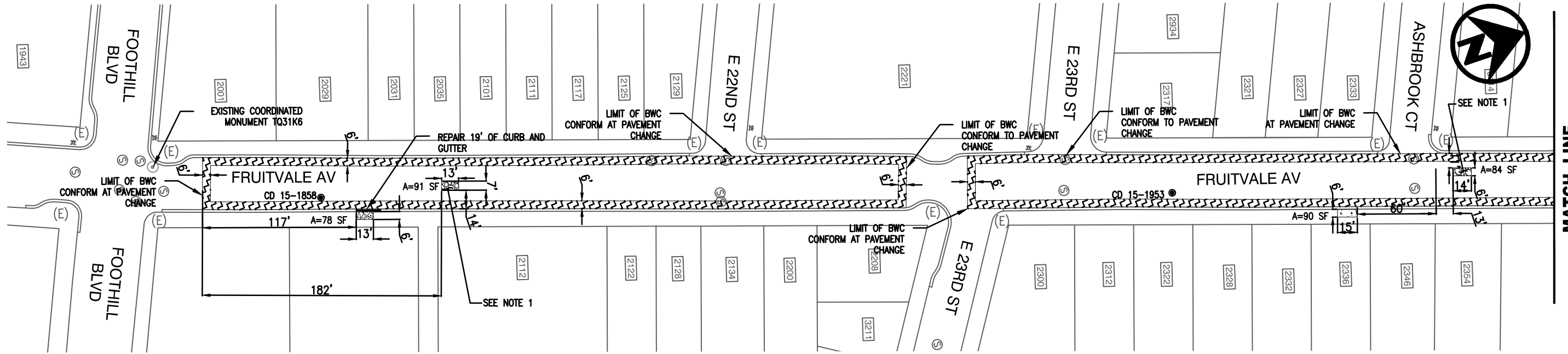
CIVIL ENGINEER
JIMMY MACH
RCE NO. C65952 EXP. 06/30/16
CHECKED BY JIMMY MACH
DESIGNED BY AC
DRAWN BY AC

No.	DATE	BY	REFERENCE

LAYOUT PLAN
ADELINE STREET
FROM 10 ST TO 19 ST

L-09

SCALE: 1"=40'
HOR.
VERT.
DATE: APRIL 2016
SHEET NO.
17 OF 29



NOTES:

1. BASE REPAIR FINISH SHALL MATCH EXISTING PAVEMENT GRADE PRIOR TO APPLYING KEYCUT AND BONDED WEARING COURSE, BWC
2. FOR ALL GENERAL NOTES, LEGENDS, ABBREVIATIONS, AND SYMBOLS, SEE SHEET D-01
3. FOR CORE SAMPLE DATA, SEE SHEET D-05
4. NO PAVING OPERATIONS WILL OCCUR OVER DECORATED CROSSWALKS



**CITYWIDE PREVENTIVE
MAINTENANCE RESURFACING**



CITY OF OAKLAND
DEPARTMENT OF ENGINEERING AND CONSTRUCTION SERVICES
250 FRANK OGAWA PLAZA, SUITE 4314 • OAKLAND, CA 94612
(510) 238-3437 • FAX (510) 238-7227
PROJECT NO. C427720

CIVIL ENGINEER JIMMY MACH	No.	DATE	BY	REFERENCE
RCE NO. C65952 EXP. 06/30/16				
CHECKED BY JIMMY MACH				
DESIGNED BY AC				
DRAWN BY AC				

LAYOUT PLAN
FRUITVALE AVE
FROM FOOTHILL BLVD TO HAROLD ST

L-10

SCALE: 1"=40'
HOR.
VERT.
DATE: APRIL 2016
SHEET NO.
18 OF 29



CITYWIDE PREVENTIVE
MAINTENANCE RESURFACING



CITY OF OAKLAND
DEPARTMENT OF ENGINEERING AND CONSTRUCTION SERVICES
250 FRANK OGAWA PLAZA, SUITE 4314 • OAKLAND, CA 94612
(510) 238-3437 • FAX (510) 238-7227
PROJECT NO. C427720

CIVIL ENGINEER
JIMMY MACH
RCE NO. C65952 EXP. 06/30/16
CHECKED BY JIMMY MACH
DESIGNED BY AC
DRAWN BY AC

No.	DATE	BY	REFERENCE

LAYOUT PLAN
FRUITVALE AVE
FROM FOOTHILL BLVD TO HAROLD ST

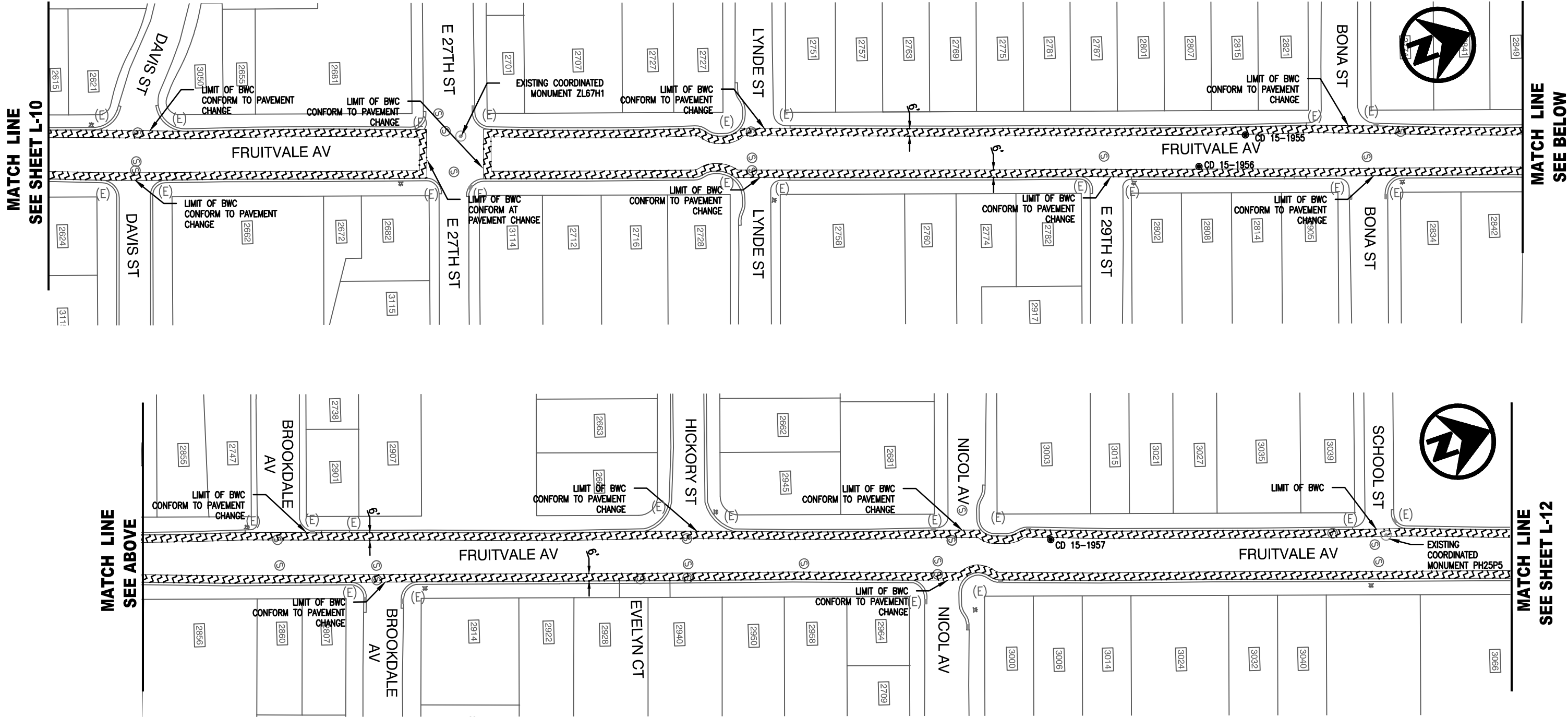
L-11

SCALE: 1"=40'
HOR.
VERT.
DATE: APRIL 2016
SHEET NO.
19 OF 29

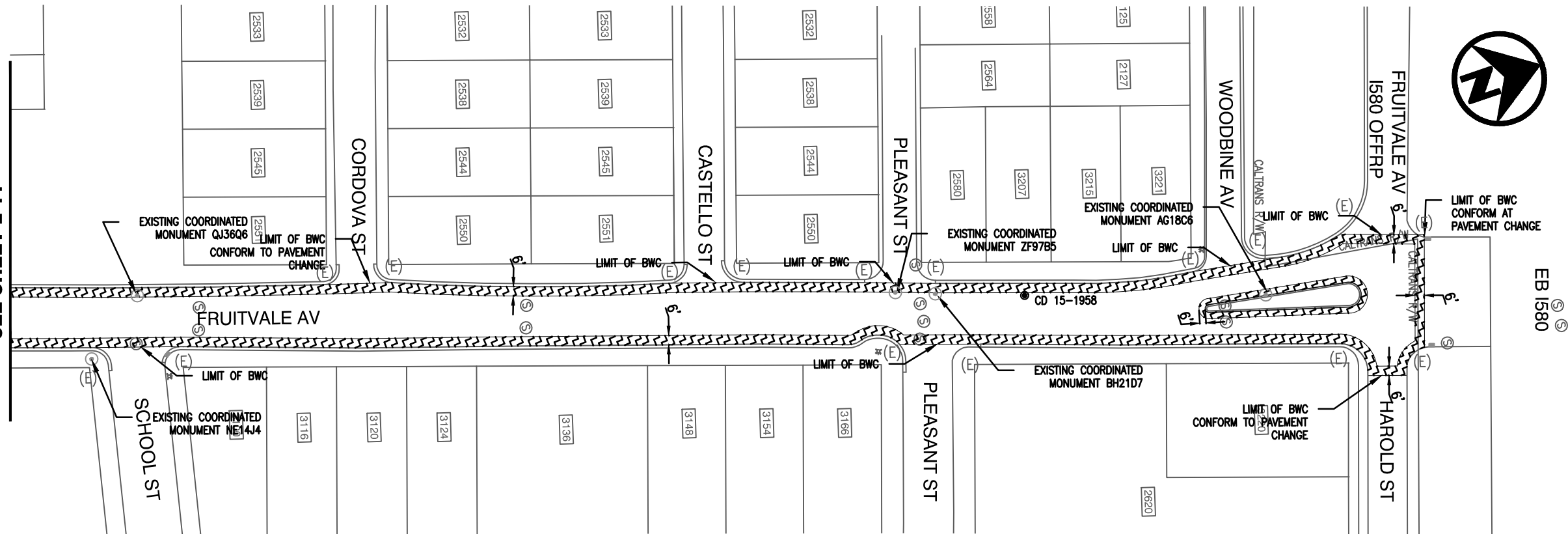


NOTES:

- FOR ALL GENERAL NOTES, LEGENDS, ABBREVIATIONS, AND SYMBOLS, SEE SHEET D-01
- FOR CORE SAMPLE DATA, SEE SHEET D-05
- NO PAVING OPERATIONS WILL OCCUR OVER DECORATED CROSSWALKS

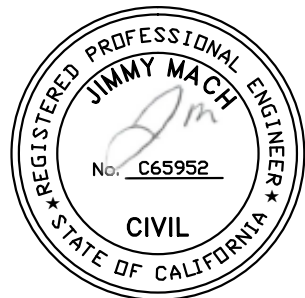


MATCH LINE
SEE SHEET L-11



NOTES:

1. FOR ALL GENERAL NOTES, LEGENDS, ABBREVIATIONS, AND SYMBOLS, SEE SHEET D-01
2. FOR CORE SAMPLE DATA, SEE SHEET D-05
3. NO PAVING OPERATIONS WILL OCCUR OVER DECORATED CROSSWALKS



CITYWIDE PREVENTIVE
MAINTENANCE RESURFACING



CITY OF OAKLAND
DEPARTMENT OF ENGINEERING AND CONSTRUCTION SERVICES
250 FRANK OGAWA PLAZA, SUITE 4314 * OAKLAND, CA 94612
(510) 238-3437 * FAX (510) 238-7227
PROJECT NO. C427720

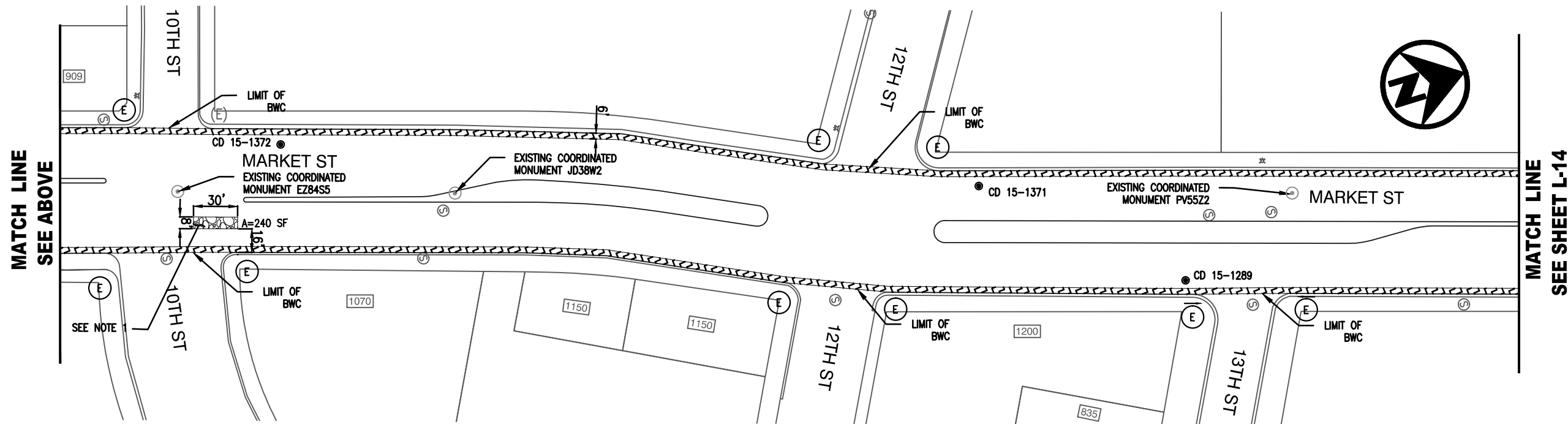
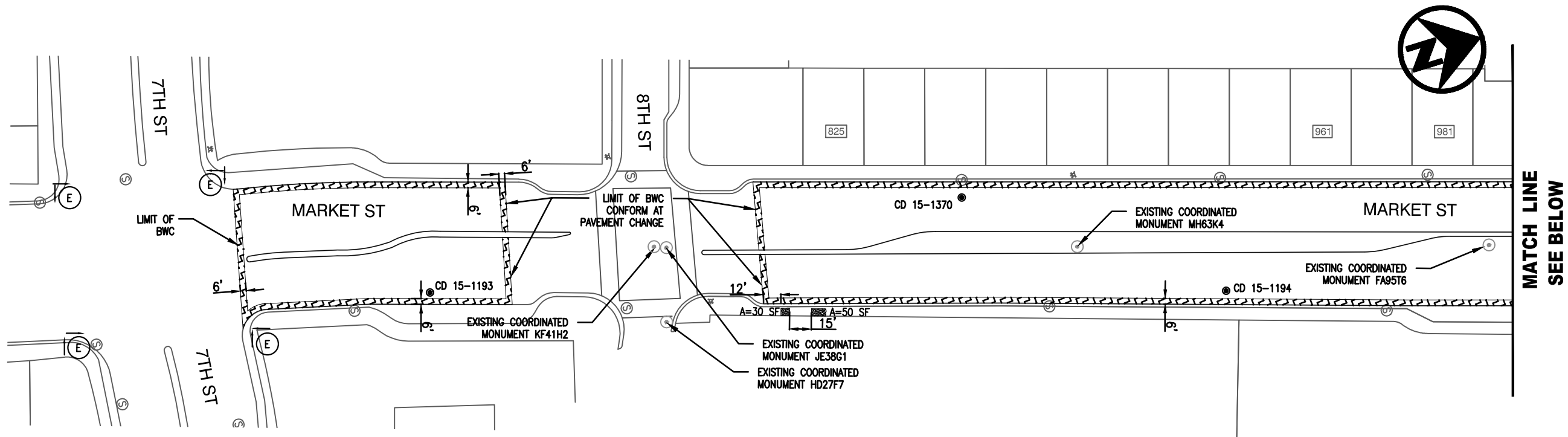
CIVIL ENGINEER JIMMY MACH	No.	DATE	BY	REFERENCE
RCE NO. C65952 EXP. 06/30/16				
CHECKED BY JIMMY MACH				
DESIGNED BY AC				
DRAWN BY AC				

LAYOUT PLAN
FRUITVALE AVE
FROM FOOTHILL BLVD TO HAROLD ST



L-12

SCALE: 1"=40'
HOR.
VERT.
DATE: APRIL 2016
SHEET NO.
20 OF 29



NOTES:

1. BASE REPAIR FINISH SHALL MATCH EXISTING PAVEMENT GRADE PRIOR TO APPLYING KEYCUT AND BONDED WEARING COURSE, BWC
2. FOR ALL GENERAL NOTES, LEGENDS, ABBREVIATIONS, AND SYMBOLS, SEE SHEET D-01
3. FOR CORE SAMPLE DATA, SEE SHEET D-05



CITYWIDE PREVENTIVE
MAINTENANCE RESURFACING



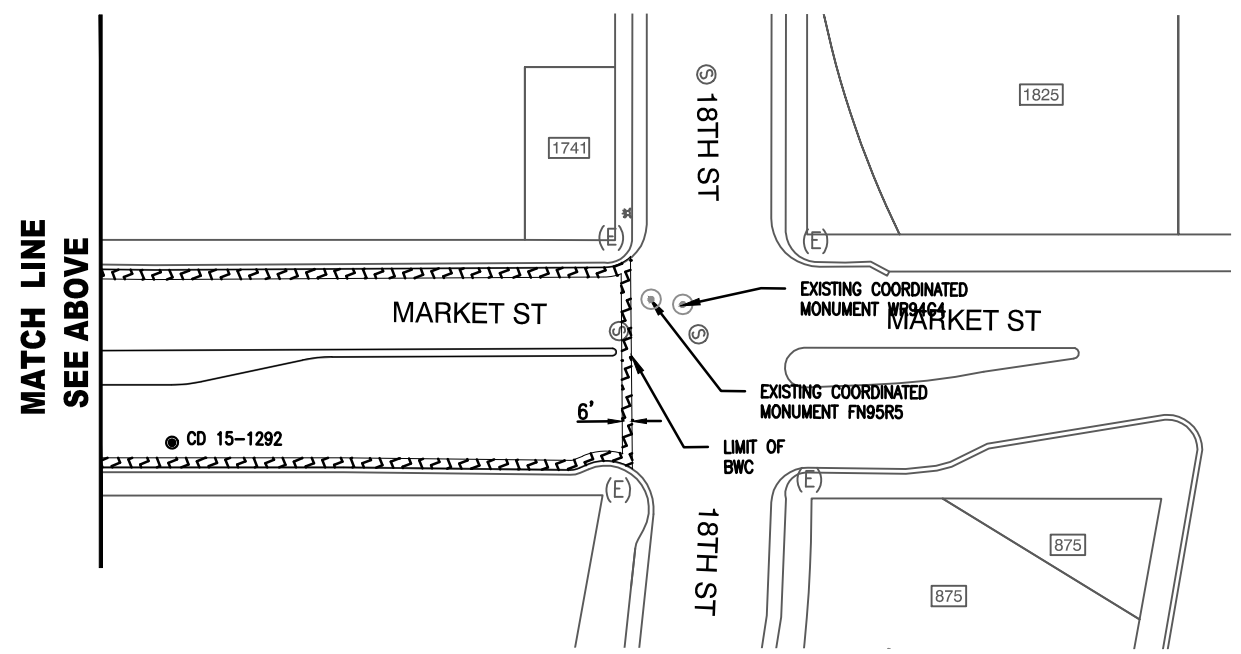
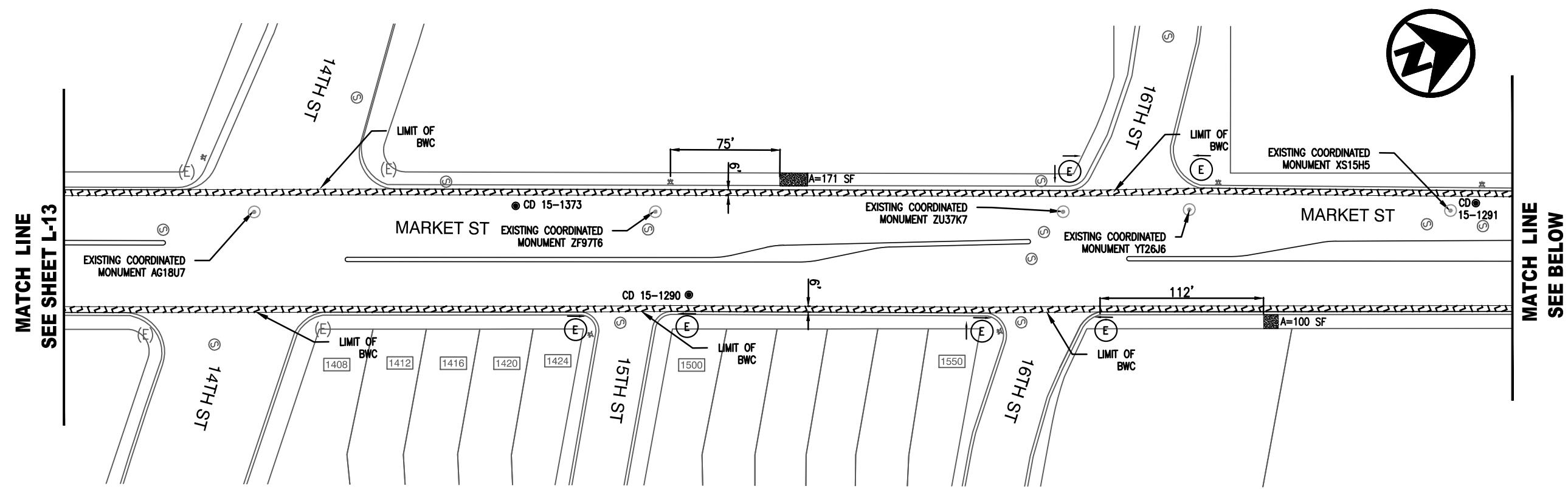
CITY OF OAKLAND
DEPARTMENT OF ENGINEERING AND CONSTRUCTION SERVICES
250 FRANK OGAWA PLAZA, SUITE 4314 • OAKLAND, CA 94612
(510) 238-3437 • FAX (510) 238-7227
PROJECT NO. C427720

CIVIL ENGINEER	JIMMY MACH	No.	DATE	BY	REFERENCE
RCE NO.	C65952	EXP.	06/30/16		
CHECKED BY	JIMMY MACH				
DESIGNED BY	AC				
DRAWN BY	AC				

LAYOUT PLAN
MARKET STREET
FROM 7TH ST TO 18TH ST

L-13

SCALE: 1"=40'
HOR.
VERT.
DATE: APRIL 2016
SHEET NO.
21 OF 29



NOTES:

1. FOR ALL GENERAL NOTES, LEGENDS, ABBREVIATIONS, AND SYMBOLS, SEE SHEET D-01
2. FOR CORE SAMPLE DATA, SEE SHEET D-05



CITYWIDE PREVENTIVE
MAINTENANCE RESURFACING



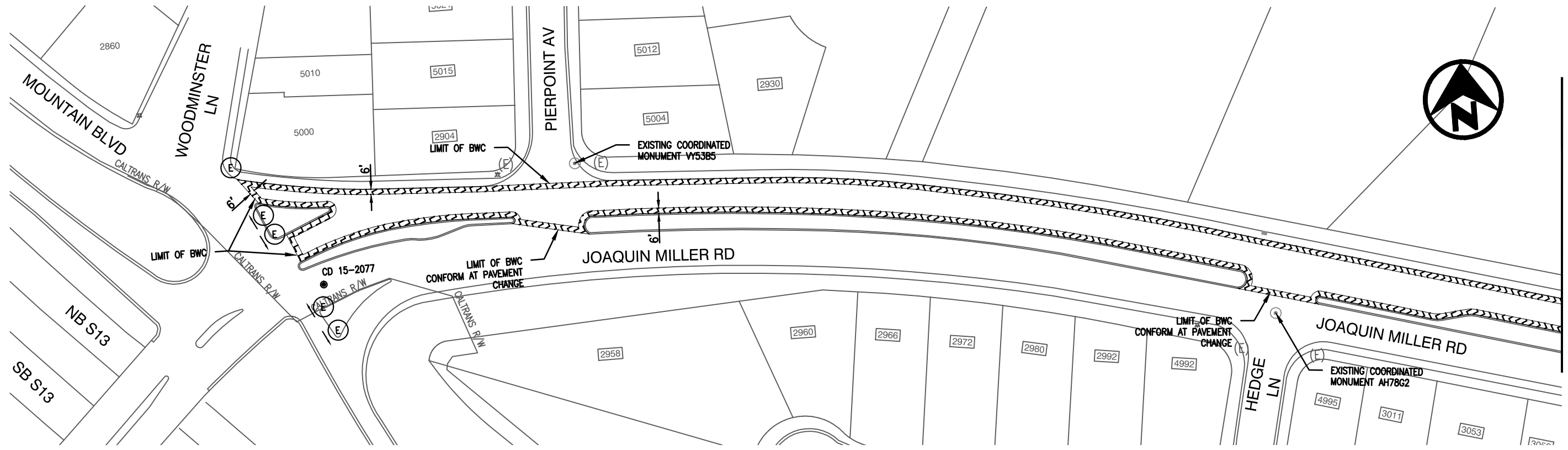
CITY OF OAKLAND
DEPARTMENT OF ENGINEERING AND CONSTRUCTION SERVICES
250 FRANK OGAWA PLAZA, SUITE 4314 * OAKLAND, CA 94612
(510) 238-3437 * FAX (510) 238-7227
PROJECT NO. C427720

CIVIL ENGINEER	JIMMY MACH	No.	DATE	BY	REFERENCE
RCE NO.	C65952	EXP.	06/30/16		
CHECKED BY	JIMMY MACH				
DESIGNED BY	AC				
DRAWN BY	AC				

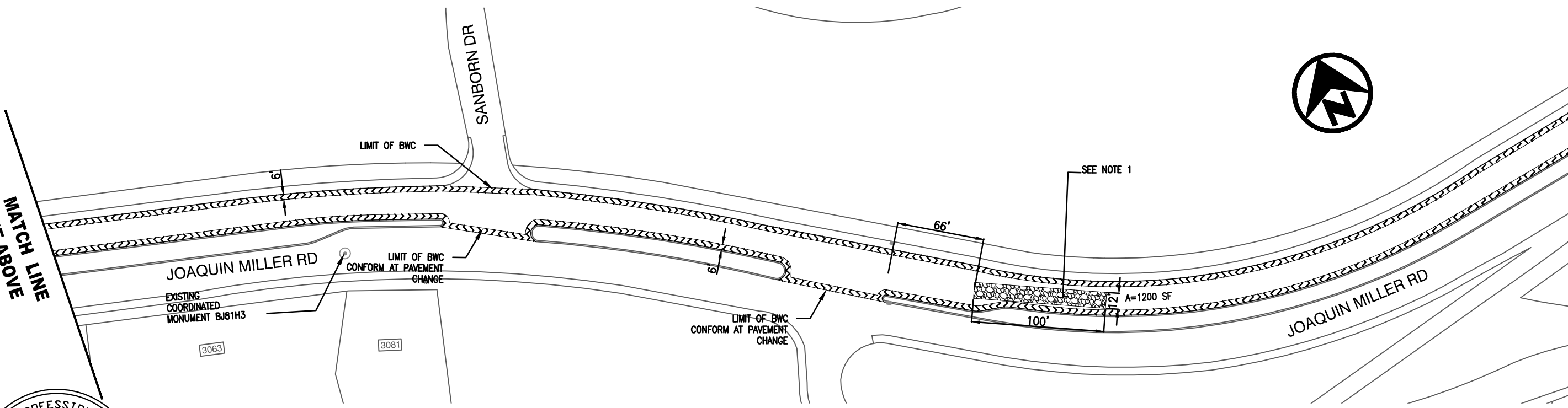
LAYOUT PLAN
MARKET STREET
FROM 7TH ST TO 18TH ST

L-14

SCALE: 1"=40'
HOR.
VERT.
DATE: APRIL 2016
SHEET NO.
22 OF 29



MATCH LINE
SEE BELOW



MATCH LINE
SEE SHEET L-16



CITYWIDE PREVENTIVE
MAINTENANCE RESURFACING



CITY OF OAKLAND
DEPARTMENT OF ENGINEERING AND CONSTRUCTION SERVICES
250 FRANK OGAWA PLAZA, SUITE 4314 * OAKLAND, CA 94612
(510) 238-3437 * FAX (510) 238-7227
PROJECT NO. C427720

CIVIL ENGINEER	JIMMY MACH	No.	DATE	BY	REFERENCE
RCE NO.	C65952	EXP.	06/30/16		
CHECKED BY	JIMMY MACH				
DESIGNED BY	AC				
DRAWN BY	AC				

LAYOUT PLAN
JOAQUIN MILLER ROAD (NORTH BOUND)
FROM MONTEREY BLVD TO SANBORN DR

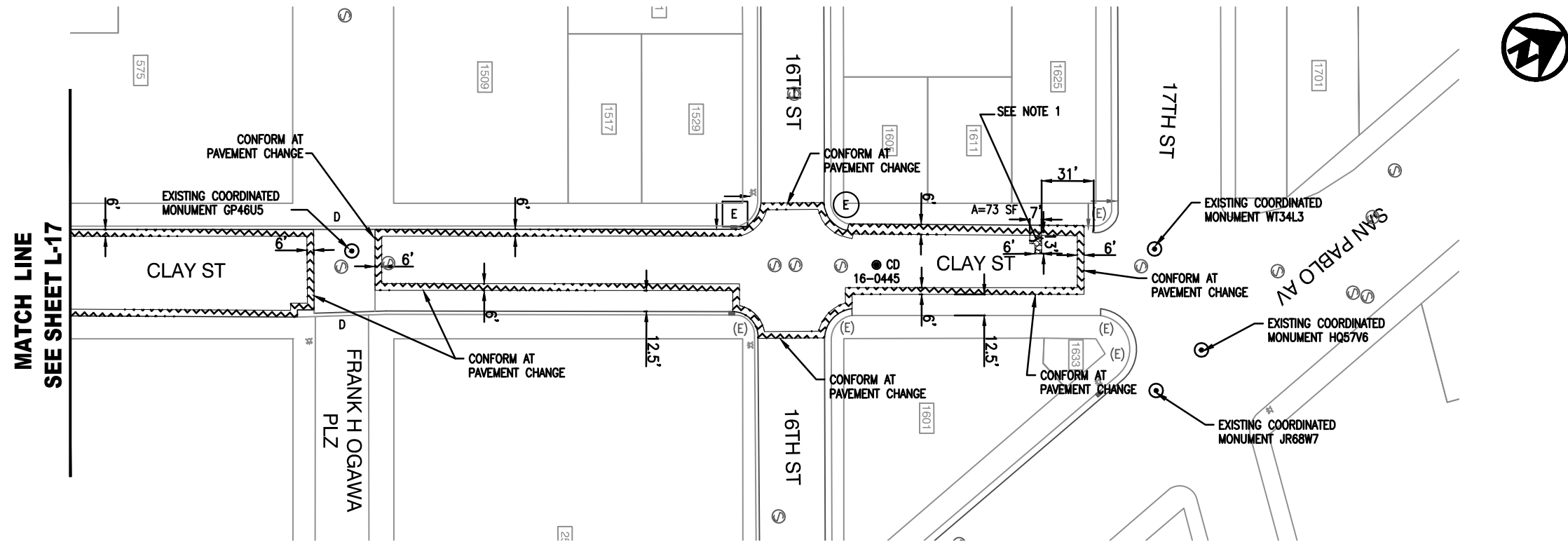


L-15

SCALE: 1"=40'
HOR.
VERT.
DATE: APRIL 2016
SHEET NO.
23 OF 29

NOTES:

1. BASE REPAIR FINISH SHALL MATCH EXISTING PAVEMENT GRADE PRIOR TO APPLYING KEYCUT AND BONDED WEARING COURSE, BWC
2. FOR ALL GENERAL NOTES, LEGENDS, ABBREVIATIONS, AND SYMBOLS, SEE SHEET D-01
3. FOR CORE SAMPLE DATA, SEE SHEET D-05



NOTES:

1. BASE REPAIR FINISH SHALL MATCH EXISTING PAVEMENT GRADE PRIOR TO APPLYING KEYCUT AND BONDED WEARING COURSE, BWC.
2. FOR ALL GENERAL NOTES, LEGENDS, ABBREVIATIONS, AND SYMBOLS, SEE SHEET D-01
3. FOR CORE SAMPLE DATA, SEE SHEET D-05



**CITYWIDE PREVENTIVE
MAINTENANCE RESURFACING**



CITY OF OAKLAND
DEPARTMENT OF ENGINEERING AND CONSTRUCTION SERVICES
250 FRANK OGAWA PLAZA, SUITE 4314 * OAKLAND, CA 94612
(510) 238-3437 * FAX (510) 238-7227
PROJECT NO. C427720

CIVIL ENGINEER
JIMMY MACH
RCE NO. C65952 EXP. 06/30/16
CHECKED BY JIMMY MACH
DESIGNED BY AC
DRAWN BY AC

No.	DATE	BY	REFERENCE

LAYOUT PLAN

CLAY ST FROM
7TH ST TO SAN PABLO AVE

L-18

SCALE: 1"=40'
HOR.
VERT.
DATE: APRIL 2016
SHEET NO.
26 OF 29



MATCH LINE
SEE ABOVE

MATCH LINE
SEE SHEET L-20

NOTES:

1. BASE REPAIR FINISH SHALL MATCH EXISTING PAVEMENT GRADE PRIOR TO APPLYING KEYCUT AND BONDED WEARING COURSE, BWC.
2. FOR ALL GENERAL NOTES, LEGENDS, ABBREVIATIONS, AND SYMBOLS, SEE SHEET D-01
3. FOR CORE SAMPLE DATA, SEE SHEET D-05
4. FOR ALL STRIPPING, PAVEMENT DELINATION, AND TRAFFIC MARKINGS, SEE MARTIN LUTHER KING JR. WAY STREET SCAPE PROJECT, CITY PROJECT NO. P414230
5. CONTRACTOR TO MAINTAIN EXISTING GUTTER FLOW LINE ALONG MLK JR WAY



CITYWIDE PREVENTIVE
MAINTENANCE RESURFACING



CITY OF OAKLAND
DEPARTMENT OF ENGINEERING AND CONSTRUCTION SERVICES
250 FRANK OGAWA PLAZA, SUITE 4314 * OAKLAND, CA 94612
(510) 238-3437 * FAX (510) 238-7227
PROJECT NO. C427720

CIVIL ENGINEER JIMMY MACH RCE NO. C65952 EXP. 06/30/16	No.	DATE	BY	REFERENCE
CHECKED BY JIMMY MACH				
DESIGNED BY AC				
DRAWN BY AC				

LAYOUT PLAN
MARTIN LUTHER KING JR WAY FROM
27TH ST TO W. MACARTHUR BLVD

L-19

SCALE: 1"=40'
HOR.
VERT.
DATE: APRIL 2016
SHEET NO.
27 OF 29

MATCH LINE
SEE SHEET L-19

MATCH LINE
SEE BELOW

MATCH LINE
SEE ABOVE

NOTES:

1. BASE REPAIR FINISH SHALL MATCH EXISTING PAVEMENT GRADE PRIOR TO APPLYING KEYCUT AND BONDED WEARING COURSE, BWC.
2. FOR ALL GENERAL NOTES, LEGENDS, ABBREVIATIONS, AND SYMBOLS, SEE SHEET D-01
3. FOR CORE SAMPLE DATA, SEE SHEET D-05
4. FOR ALL STRIPPING, PAVEMENT DELINATION, AND TRAFFIC MARKINGS, SEE MARTIN LUTHER KING JR. WAY STREET SCAPE PROJECT, CITY PROJECT NO. P414230
5. CONTRACTOR TO MAINTAIN EXSITING GUTTER FLOW LINE ALONG MLK JR WAY



CITYWIDE PREVENTIVE
MAINTENANCE RESURFACING



CITY OF OAKLAND

DEPARTMENT OF ENGINEERING AND CONSTRUCTION SERVICES
250 FRANK OGAWA PLAZA, SUITE 4314 * OAKLAND, CA 94612
(510) 238-3437 * FAX (510) 238-7227
PROJECT NO. C427720

CIVIL ENGINEER
JIMMY MACH
RCE NO. C65952 EXP. 06/30/16
CHECKED BY JIMMY MACH
DESIGNED BY AC
DRAWN BY AC

No.	DATE	BY	REFERENCE

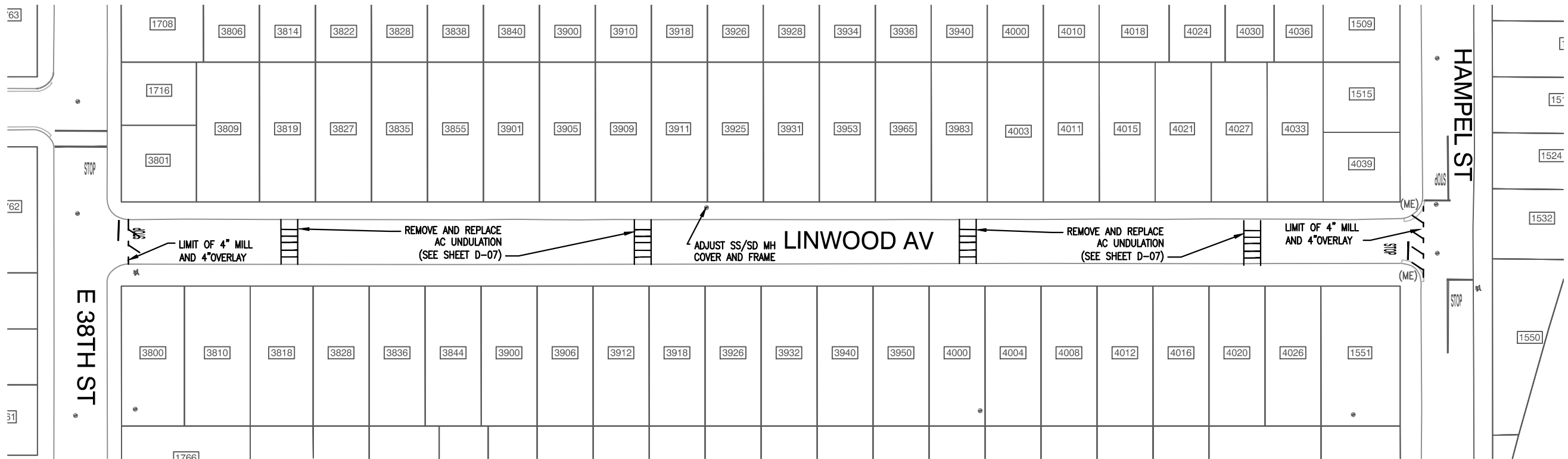
LAYOUT PLAN

MARTIN LUTHER KING JR WAY FROM
27TH ST TO W. MACARTHUR BLVD



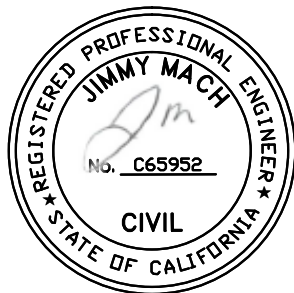
L-20

SCALE: 1"=40'
HOR.
VERT.
DATE: APRIL 2016
SHEET NO.
28 OF 29



NOTES:

1. FOR ALL GENERAL NOTES, LEGENDS, ABBREVIATIONS, AND SYMBOLS, SEE SHEET D-01
2. FOR CORE SAMPLE DATA, SEE SHEET D-05



CITYWIDE PREVENTIVE
MAINTENANCE RESURFACING



CITY OF OAKLAND
DEPARTMENT OF ENGINEERING AND CONSTRUCTION SERVICES
250 FRANK OGAWA PLAZA, SUITE 4314 * OAKLAND, CA 94612
(510) 238-3437 * FAX (510) 238-7227
PROJECT NO. C427720

CIVIL ENGINEER
JIMMY MACH
RCE NO. C65952 EXP. 06/30/16
CHECKED BY JIMMY MACH
DESIGNED BY AC
DRAWN BY AC

No.	DATE	BY	REFERENCE

LAYOUT PLAN

LINWOOD AVENUE FROM E 38TH STREET TO
HAMPEL STREET

L-21

SCALE: 1"=40'
HOR.
VERT.
DATE: APRIL 2016
SHEET NO.
29 OF 29